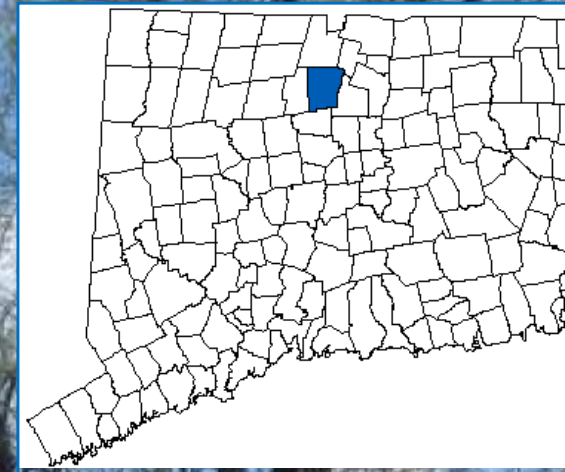


November 17, 2021
Complete Streets and
Traffic Calming

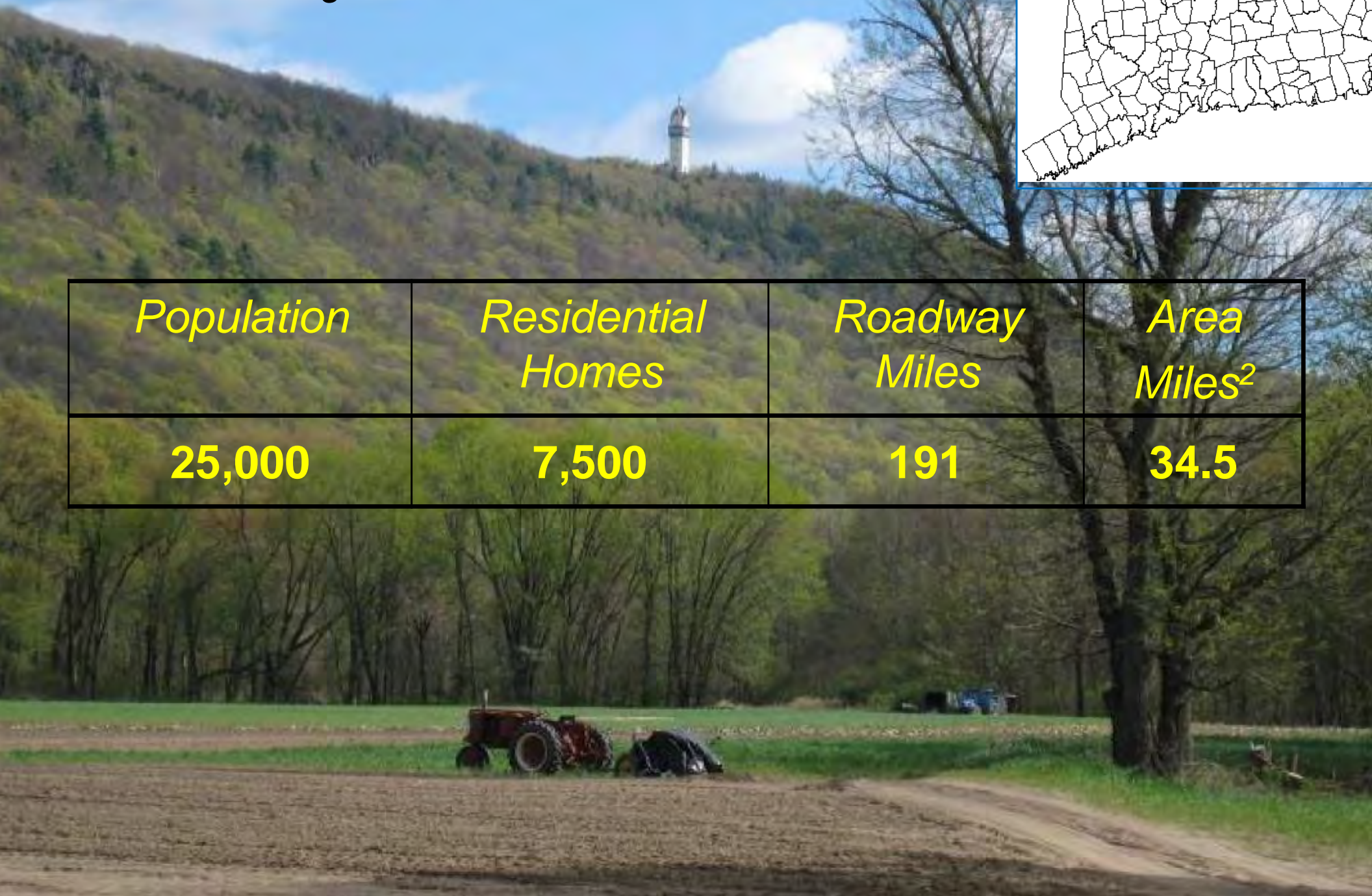


Town of Simsbury
Thomas J. Roy, PE
Director of Public Works

Simsbury Connecticut



<i>Population</i>	<i>Residential Homes</i>	<i>Roadway Miles</i>	<i>Area Miles²</i>
25,000	7,500	191	34.5



Simsbury

SIMSBURY
CONNECTICUT

- *Suburban Community*
- *1/3 of Land is Preserved Open Space*
- *VERY “engaged” residents*
- *Many older farm to market roads*
- *East Coast Greenway*
- *Silver Bike Friendly Community*



How We Started - Bikes

SIMSBURY
CONNECTICUT



In 2009 Started Working Toward Bike Friendly Designation

- Added Sharrows and Signage to many of our roadways
- Worked on our existing trail network – part of the East Coast Greenway
- Created a bike share program, Simsbury Free Bike



2010 Awarded BFC Bronze community

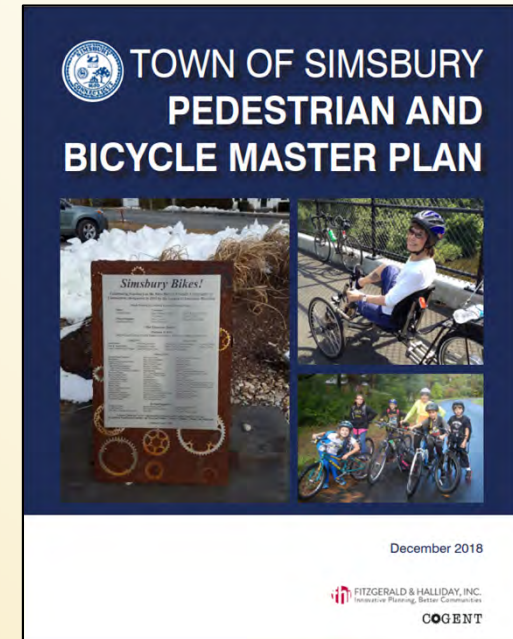
2014 Awarded BFC Silver community



How We Started Pedestrian Bicycle Master Plan

2018 Building off our Bike Friendly Designation
Working with FHI we conducted a Town
Pedestrian and Bicycle Master Plan

- Extensive outreach and engagement
- Our residents wanted:
 - Walkability and sidewalks
 - Safe streets

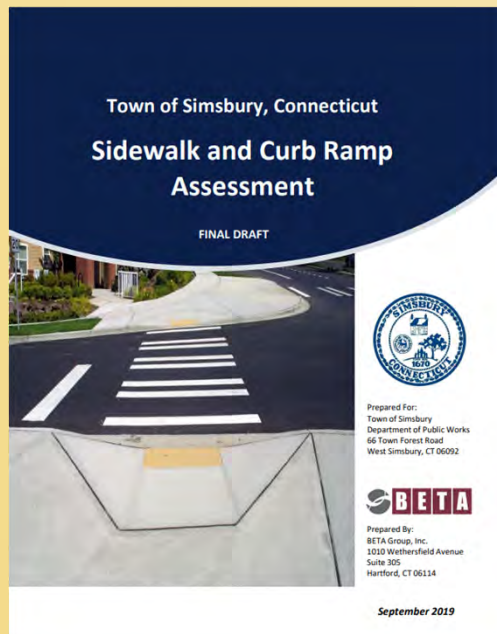


How We Started Sidewalk and Curb Ramp Assessment

Building off our Pedestrian Bicycle Master Plan:

2019 Town conducted a Sidewalk and Curb Ramp Assessment Plan with BETA Group

- Led to a \$200,000 annual sidewalk improvement plan
- Full ADA ramp compliance is our 15 year goal



We have just completed the third year of the program and it has been a huge success - we are replacing existing deteriorated walks

Traffic Calming

In August of 2019 Simsbury applied for and was awarded the CRCOG Active Transportation Grant – Traffic Calming Demonstration Project

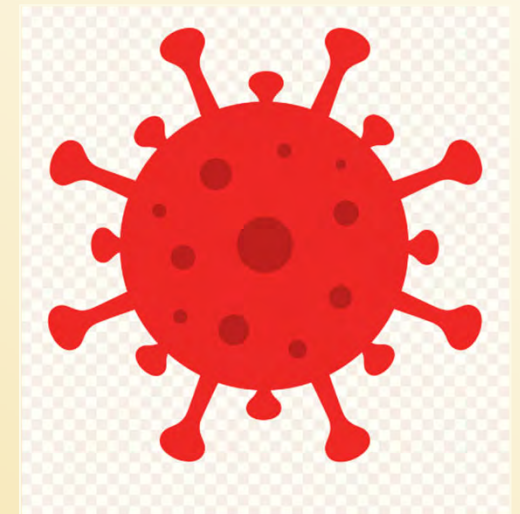
Our goal at the time was to investigate traffic calming on David Drive – a residential street that serves as a cut-through.

ADT

More specifically, the road had been closed for a block party and a car that was speeding down the road skidded into the barricade...

Traffic Calming – David Drive

- We were ready to implement our temporary traffic calming for Spring / Summer of 2020...

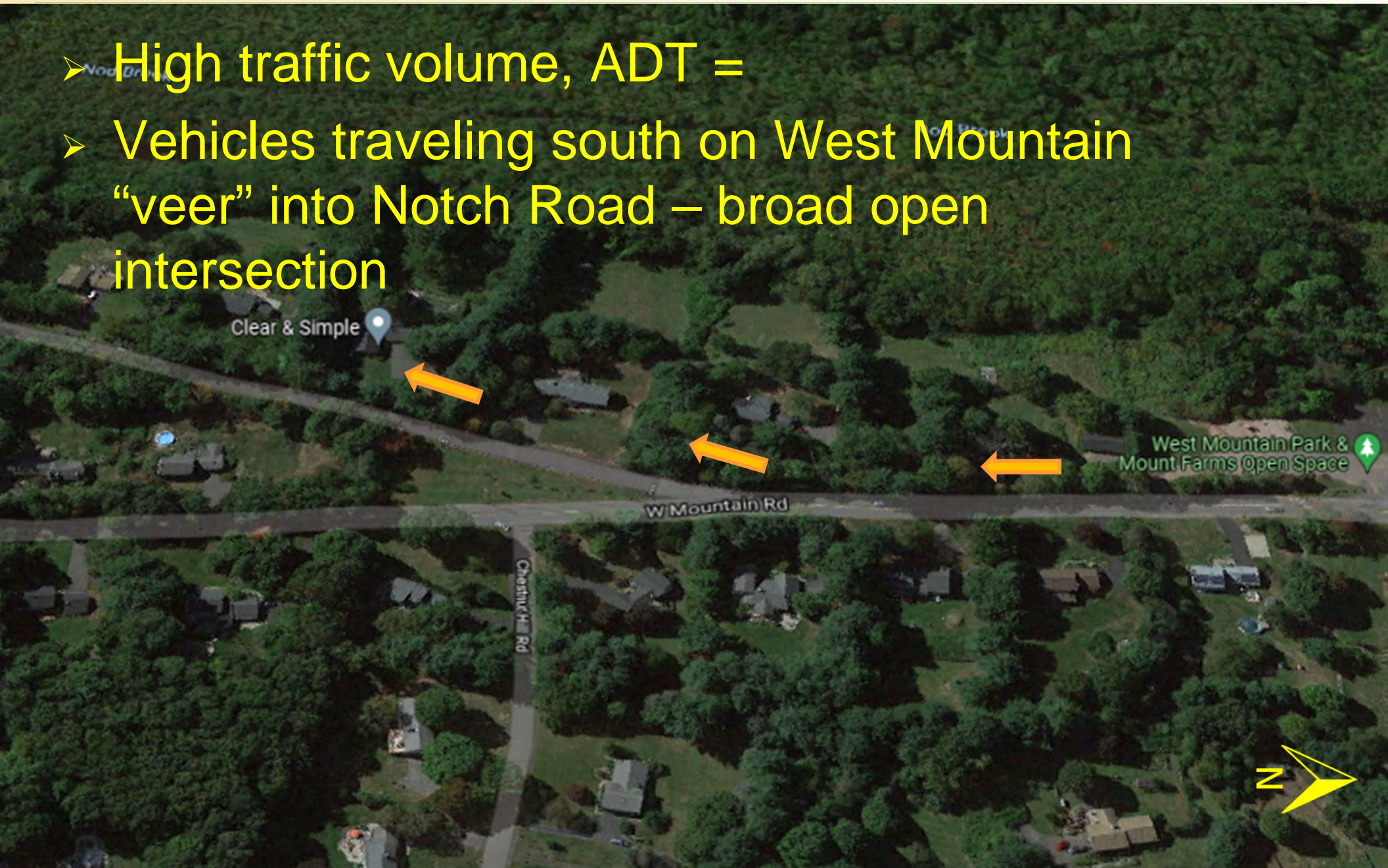


Notch Road at West Mountain Road

- Resident of Notch Road began contacting the police about speeding on Notch Road
- Road allowed high volume of traffic to access Canton and Rt. 44
- Long standing issue, now with a motivated resident – teenager in the house, about to get her driver's license

Notch Road at West Mountain Road

- High traffic volume, ADT =
- Vehicles traveling south on West Mountain “veer” into Notch Road – broad open intersection



Notch Road at West Mountain Road

Intersection looking South



Notch Road at West Mountain Road

Intersection looking North



Notch Road at West Mountain Road

The numbers:

- ADT 968 vpd
- Average Speed 40.4 mph
- 85th Percentile 45 mph
- Fastest... **75 mph**

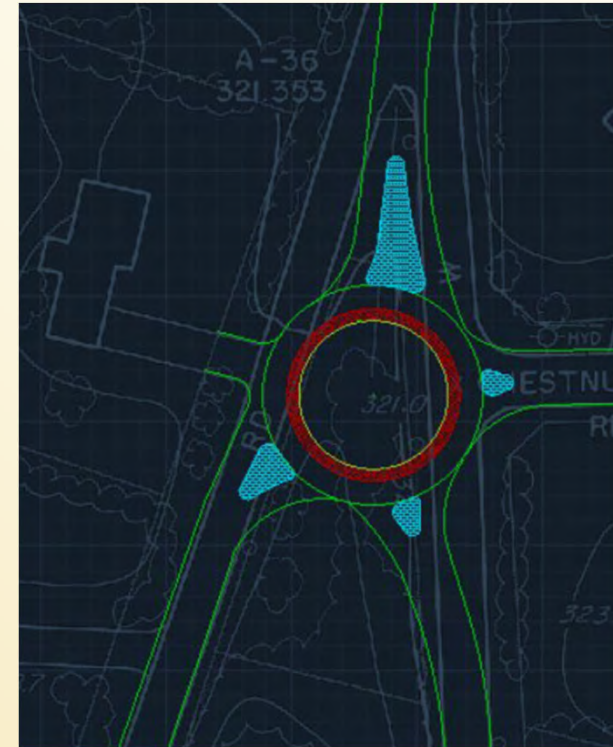


Both West Mountain and Notch Roads are posted 30mph

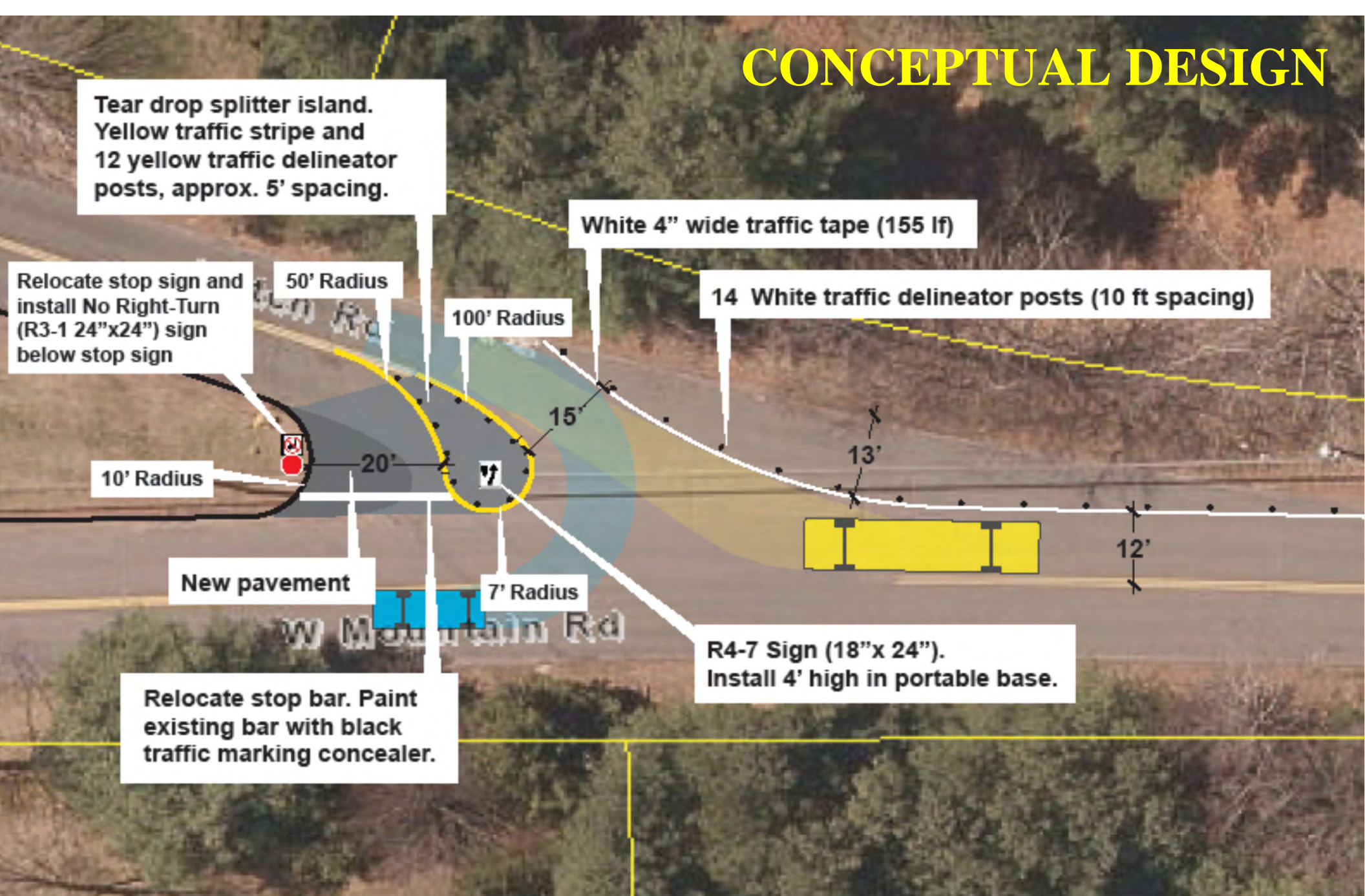
Notch Road at West Mountain Road

Options Considered:

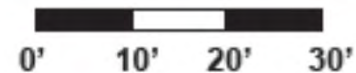
- Roundabout – worked with UConn Civil Engineering students on alternative
 - Required driveway to enter directly into the roundabout
 - High cost
- T-up the intersection with Chestnut Hill Road to make a 4-way intersection
 - Lose park or part of park area
- Make Notch Road One-Way (north only)
 - Residents objected
- Realign intersection to narrow approach – add a traffic island to make a more distinct turn movement



CONCEPTUAL DESIGN



Notch Road and West Mountain Road, Simsbury
Complete Streets Concept
7/13/20



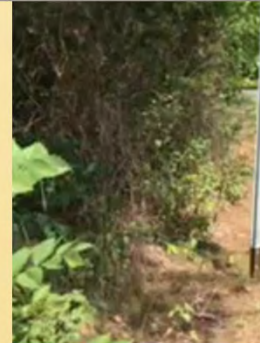
FITZGERALD & HALLIDAY, INC.
Innovative Planning. Better Communities



SPEED
LIMIT
30

Notch Road at West Mountain Road

- We worked with our PD, FD and school bus company to be sure this concept would work!



Notch Road at West Mountain Road

- We worked with our PD, we measured results and monitored social media...

- Revised speed DATA

	<u>With Calming</u>	<u>Prior #'s</u>
• ADT	886.5vpd	968 vpd
• Average Speed	37.5 mph	40.4 mph
• 85 th Percentile	42 mph	45 mph
• Fastest...	72 mph	75 mph

- All this for 3.0 miles per hour
- And the residents LOVED it!

Notch Road at West Mountain Road



Town of Simsbury, Connecticut- Public Works Department
★ Favorites · August 28, 2020 · 🌐

What's this? Traffic calming!

Why is it here? To slow down vehicles traveling in the area of the intersection of Notch Road and West Mountain Road.

Is this permanent? This is a temporary reconfiguration of the roadway. We will review the effectiveness of this installation to determine if a permanent change needs to be made. ... [See more](#)



Dana ...

To slow down, take foot off gas, put on brake., monitor the speedometer and the speed limit signs. 👍 ✓ ✓ ✓ 😊

Like · Reply · 1y



Kim ...

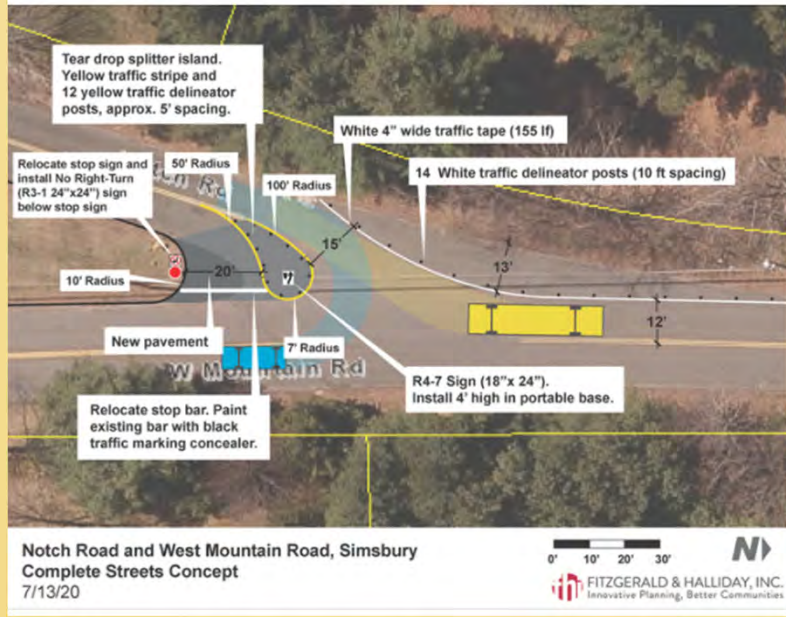
Things change.

It's a weird set up, but drivers are WAAAY too fast on this turn. I like the change to the entry to West Mountain, BTW. It eliminates a lot of confusion and neck craning. Please don't dead end the road.



Rich ...

Looks nice except for the narrowing of the southbound lane. Now they have to hit the brakes to peel off to the right.



Notch Road at West Mountain Road

Based on the results, we felt comfortable the design worked...
Now to make it permanent!



Blue Pacific Shore Juniper – 18"-24", low spreading groundcover that provides dense blue-green foliage best left in its natural form. It is notably heat tolerant similar to an Evergreen. Can be placed in ground or in planters.



Autumn Moor Grass – Cool-season, clumping grass with foliage that is semi-evergreen to evergreen. This is a white flowering grass and the plants themselves are durable and can tolerate light shade

- Requested \$35,000 during budget process
 - Residents sent letters/e-mails of support

- Once budget passed, we hired BL Companies to confirm final design, provided stamped drawings and a rendering
- We met with residents to discuss final design and plantings



FINISHED PRODUCT

SIMSBURY
CONNECTICUT



FINISHED PRODUCT

SIMSBURY
CONNECTICUT




FINISHED PRODUCT


SIMSBURY
CONNECTICUT



Notch Road – Time Line

April 2020	Problems, issues of speed reported to Simsbury PD
May 2020	Issue is referred to Public Works
July 2020	Temporary traffic calming installed
Dec. 2020	Proposed project submitted in budget process
May 2021	Funding approved
July 2021	Funding available
Oct. 2021	Project completed!!! All in 18 Months!

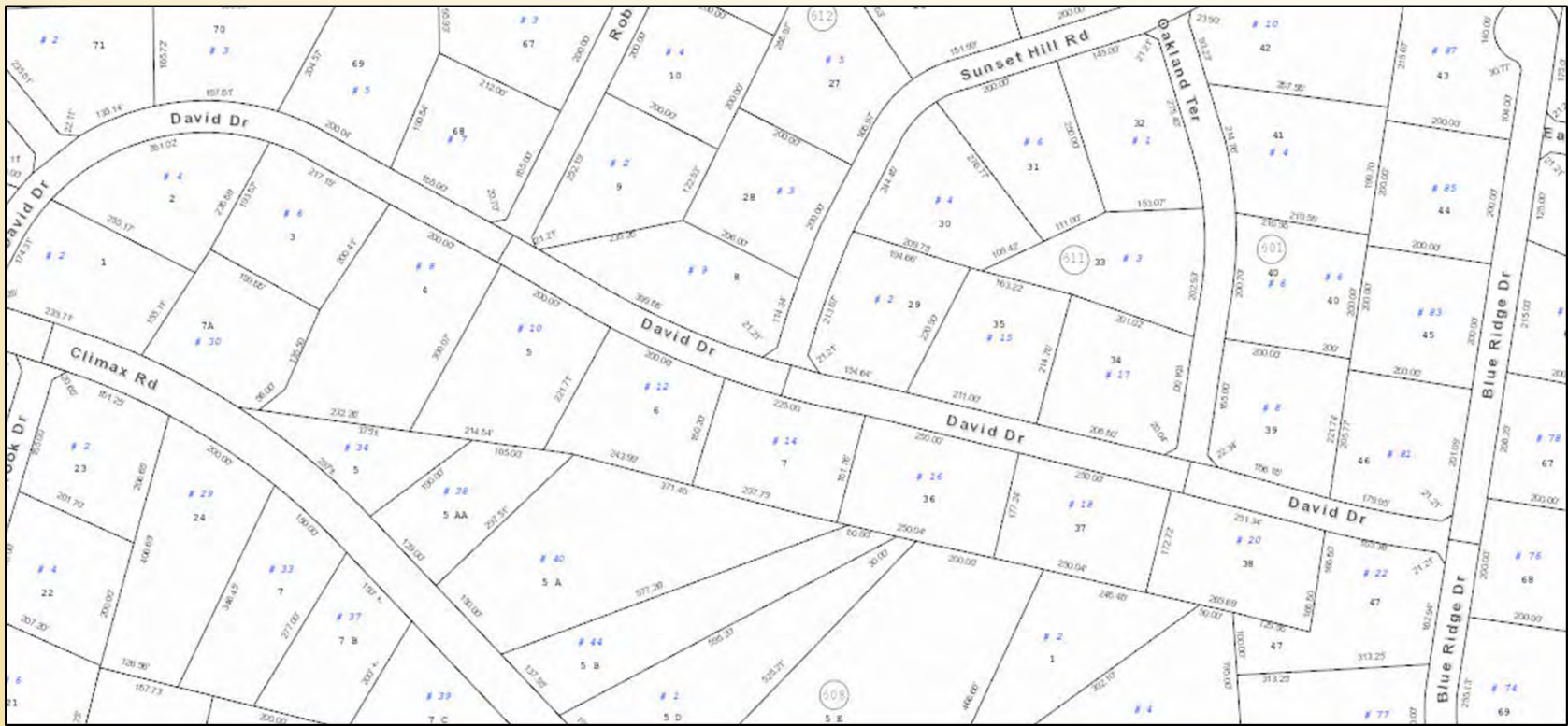
 Richard Gallagher <rsg44@att.net> | Tom Roy; Chris Evans; maureen@clear-simple.com; Sean Grady; Capriola Maria E.; + 2 ▾ 10/13/21
Re: Notch Road Status Update

 You replied to this message on 10/15/2021 1:52 PM.

To all.... Thank you Chris and Tom for your efforts to promote safety at the intersection of Notch and West Mountain Road. The traffic calming plan from what we can see from our strategic location is working....just fine!! Autos, trucks, school buses, mini vans, etc. are all moving through this intersection at the "**speed limit**" without any problem. Vehicles are now stopping too!! Bikers over the weekend were also commenting verbally in a positive manner about the change. The construction and appearance of the island, drainage issues resolved, river rock and plantings were all focused on... Quality! Tom, you and your crew did an outstanding job! Please thank them for us too. FYI, Over the weekend, our Simsbury Beautification Committee contributed the Mum Plants we now have in the planter boxes on the Triangle. Good timing!!

DAVID DRIVE STUDY

- Residential neighborhood street
- Serving as a cut-through between Route 10 (Hopmeadow Street) and Route 167 (Bushy Hill Road)
- Traffic during commuting times and school kids
- Street begins at the top of a ridge and has a steady down hill slope
- Study area is ~0.4 mile straight section with three “T” intersections
- We looked at multiple configurations over the course of several months



DAVID DRIVE STUDY

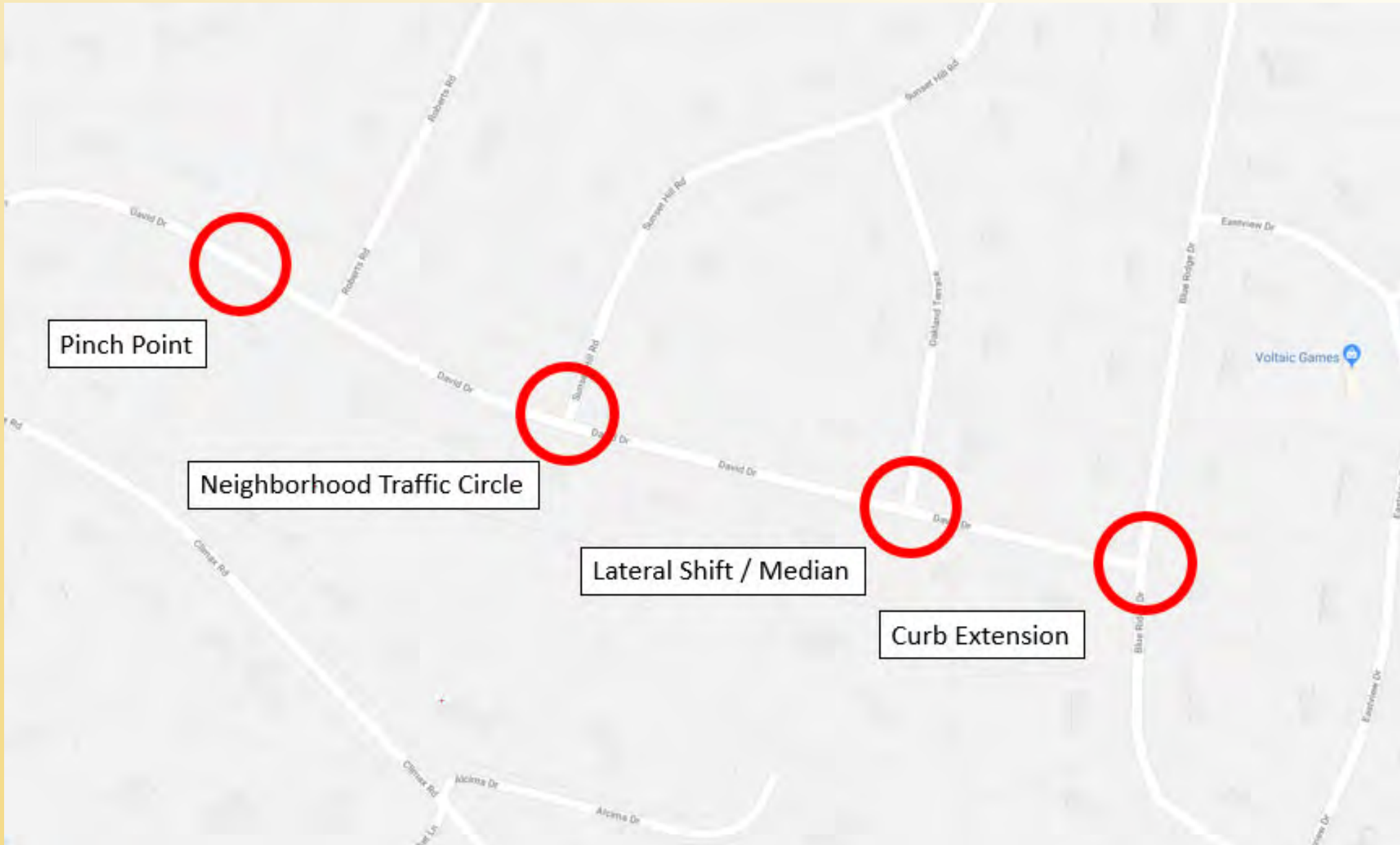
SIMSBURY
CONNECTICUT

The numbers:

ADT	968 vpd
Average Speed	31 mph
85 th Percentile	36 mph
Fastest...	60 mph



DAVID Drive



Curb Extension



Curb Extension

SIMSBURY
CONNECTICUT



Neighborhood Traffic Circle

SIMSBURY
CONNECTICUT



Lateral Shift / Median



Lateral Shift /Median

SIMSBURY
CONNECTICUT




DAVID DRIVE STUDY

Study is complete:

We are now waiting on the results of our Resident Survey and then we will dive deep into the traffic data!!!



 Stephen [redacted]
Great to see the use of roundabouts! Very effective it seems and several great locations for them here in Simsbury.

If anyone owns a (redacted for page rules) who always seems to be running late in the mornings at about 730-745 am, I'm looking at you. I'm one of the concerned parents waiving my arms for you to slow it down every Monday through Friday at the bus stop. You almost slammed into my neighbors car today, I'm surprised you narrowly missed that accident!

Slow down people!

   31

42 Comments

DAVID DRIVE STUDY

SIMSBURY
CONNECTICUT

Working with the public...

... I do not think any of the calming measure have been effective. I think we have to make a decision to live with the dangerous situation or do something much more serious about it. A number of residents have begun to take measures into their own hands, like following cars and setting up radar-guns to track and post speeds. There have been multiple verbal altercations (which fortunately did not end up getting physical)...

I'm not convinced the Town would be willing to implement the measures necessary to curb this behavior

Mr. Roy.

I hope this finds you well. Please remove the traffic pylons at the intersection of BR and David. I appreciate and support efforts to have drivers slow down for the safety of children and pedestrians, but the existing measures are absurd. If there's a car at the intersection on David, it is NOT PHYSICALLY POSSIBLE to make the turn from Blue Ridge. I've seen near accidents there, and I am certain it won't be long until there is one and the town is sued. If the town is going to make it impossible for a car to make the turn, and there is a collision, then a claimant would seem to have a strong case that the accident is the town's fault. Aside from that, it's just a notable inconvenience. Again, slowing cars down is a noble goal. This measure is ridiculous.

Thank you.

SUMMARY

- Small projects matter to the residents
- Traffic calming is not always popular or easily understood
- Small changes in speed are a “win” and will make residents safer
- Working with residents is “fun” and necessary for success
- Perception of what works is just as important as hard data

Questions?





Simsbury

