

Sustainability and Complete Streets



City of New Haven
Justin Elicker, Mayor

Giovanni Zinn, P.E.
Dawn Henning, P.E.



CLIMATE & SUSTAINABILITY FRAMEWORK

CITY OF NEW HAVEN
JANUARY 2018

Electric Power

Transportation

Food

Buildings

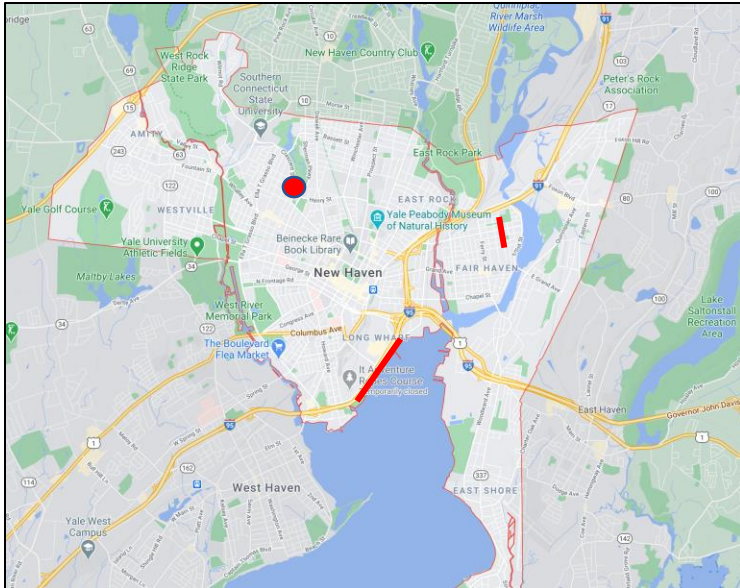
Land + Infrastructure

Materials Management

www.newhavenct.gov/engineering

Today's Examples

- Crescent St + Munson St
- Long Wharf Drive
- Clinton Ave



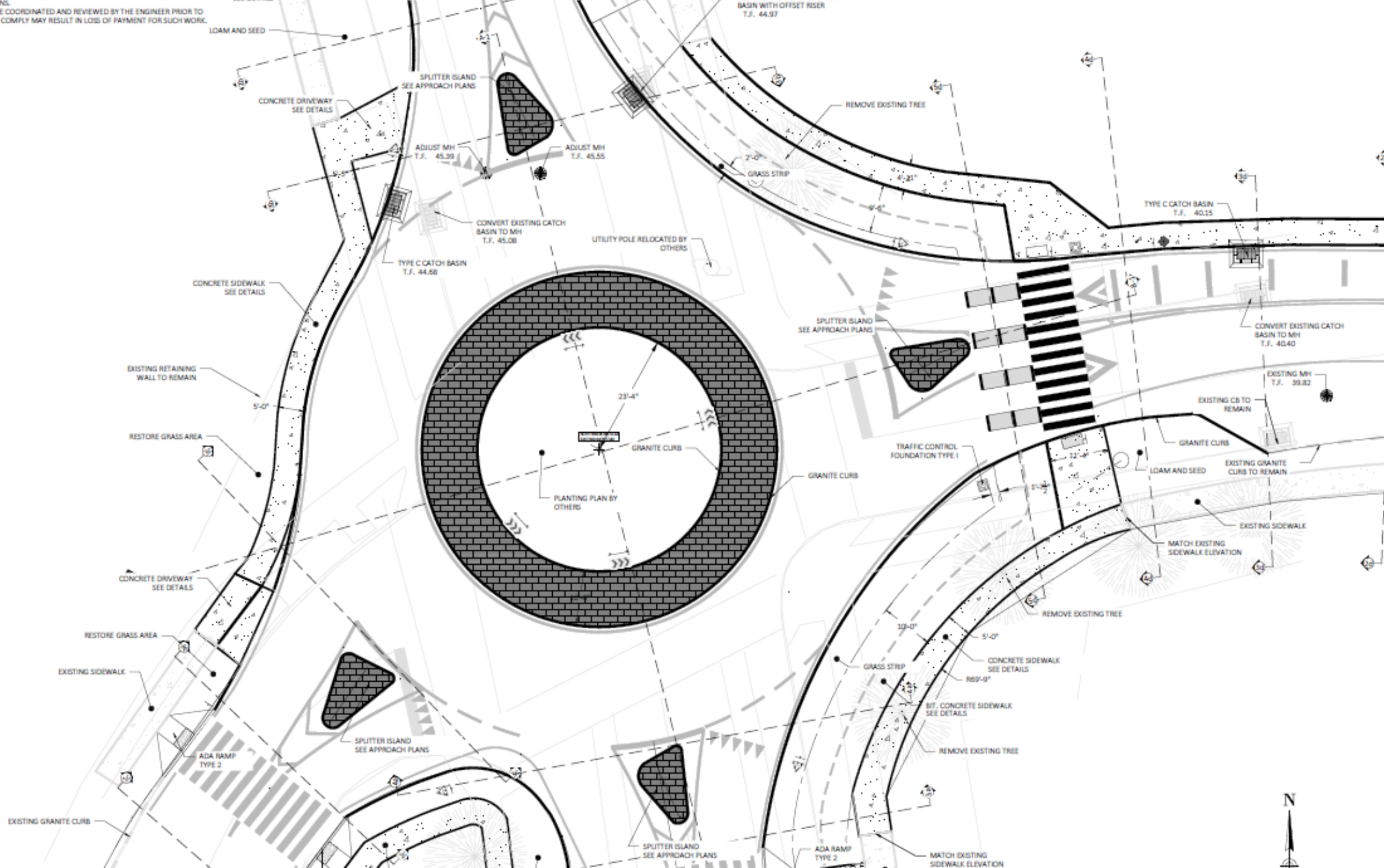
Crescent St and Munson St

- Odd intersection geometry
- Hillhouse High School
- Bowen Field
- Bike/ped corridor
- SCSU





CONFORM TO THESE PLANS.
(3) LOAM AND SEED MUST BE COORDINATED AND REVIEWED BY THE ENGINEER PRIOR TO
PLACEMENT. FAILURE TO COMPLY MAY RESULT IN LOSS OF PAYMENT FOR SUCH WORK.





Long Wharf Drive

- Waterfront Access
- Highway Access
- Food Truck Paradise
- Bike/ped corridor







Connecticut Turnpike

Connecticut Turnpike

95

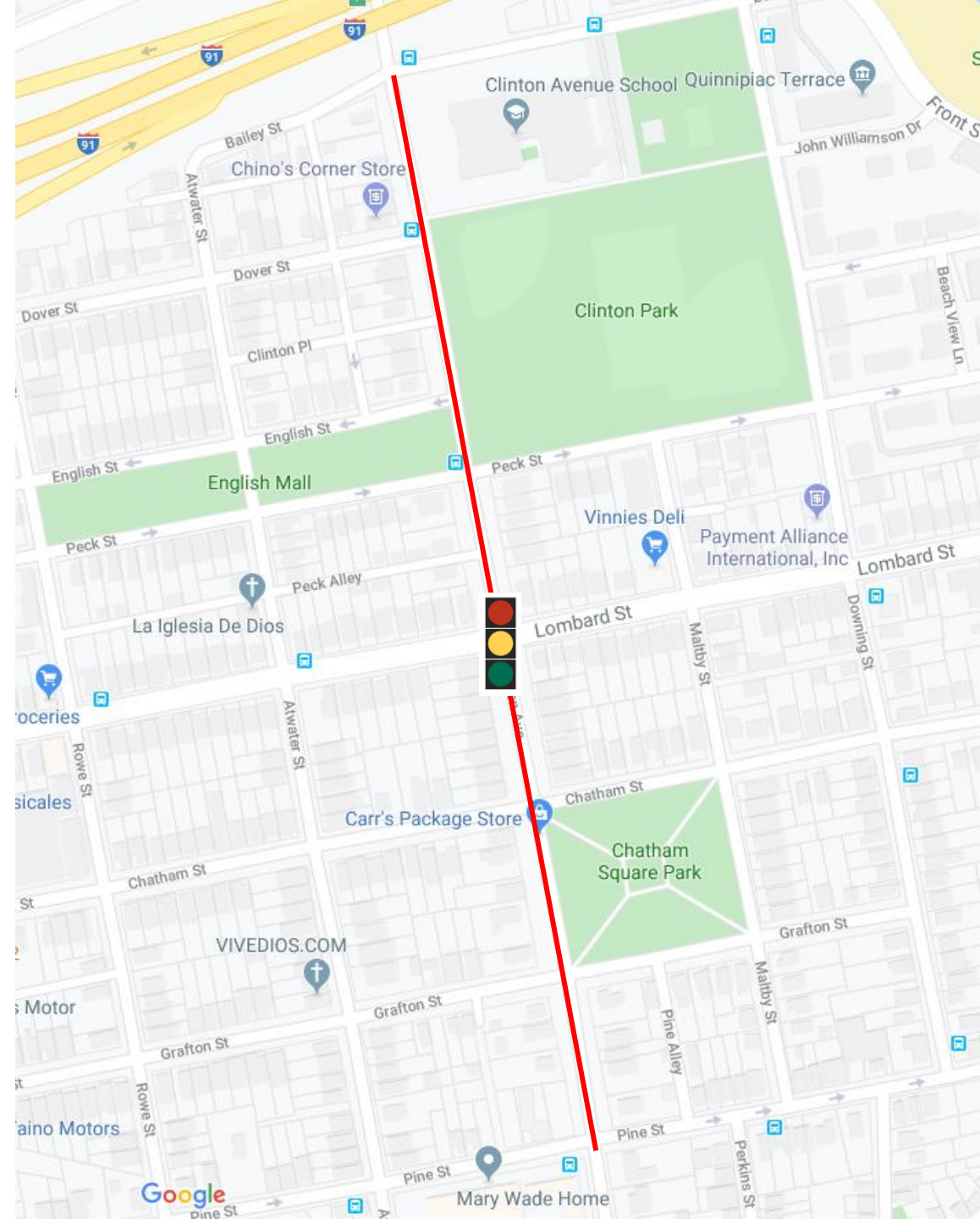
95

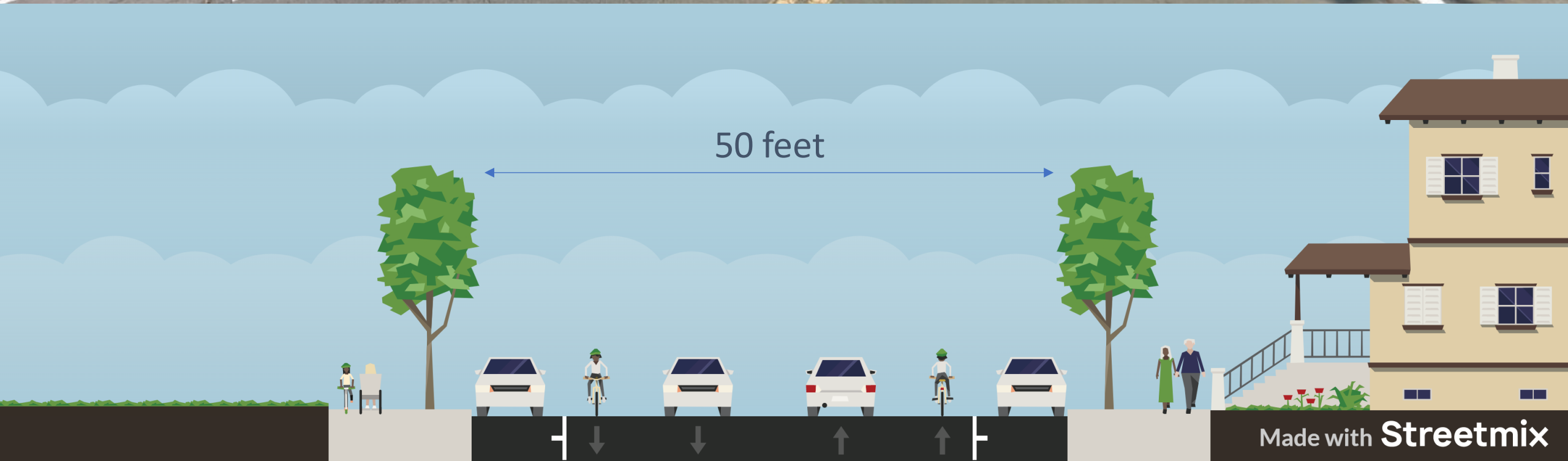


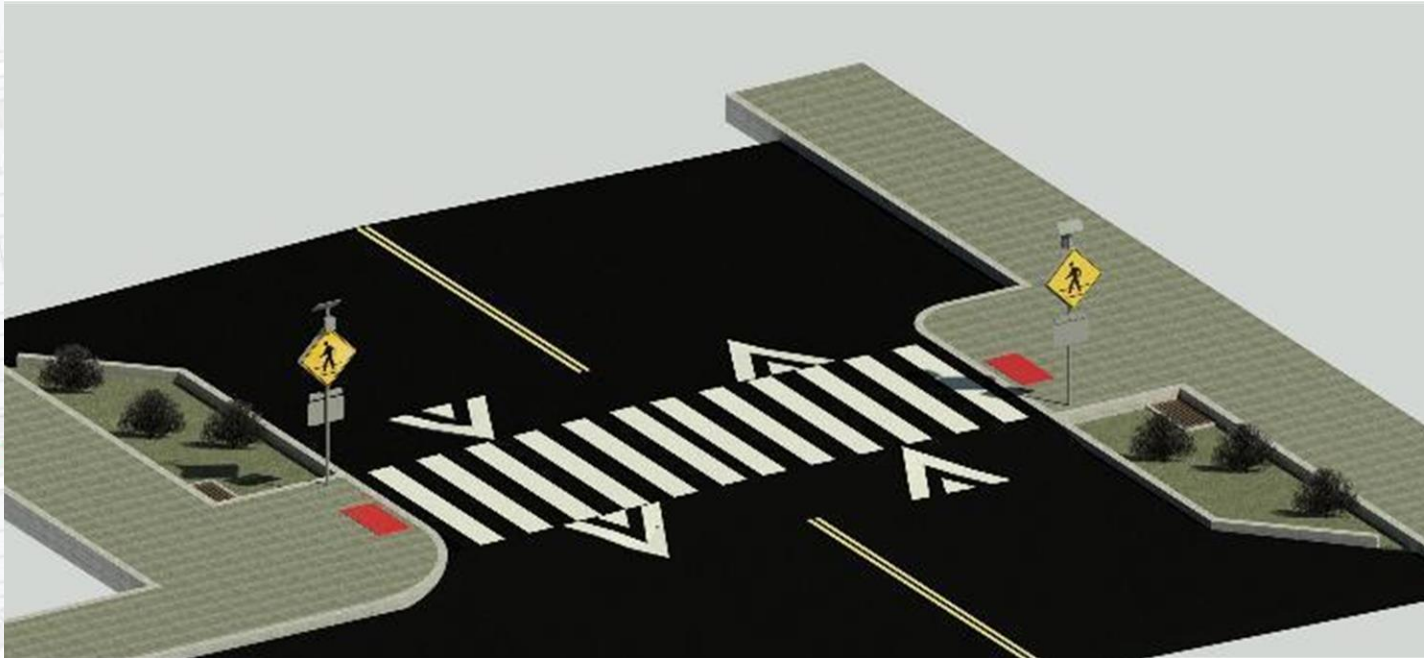
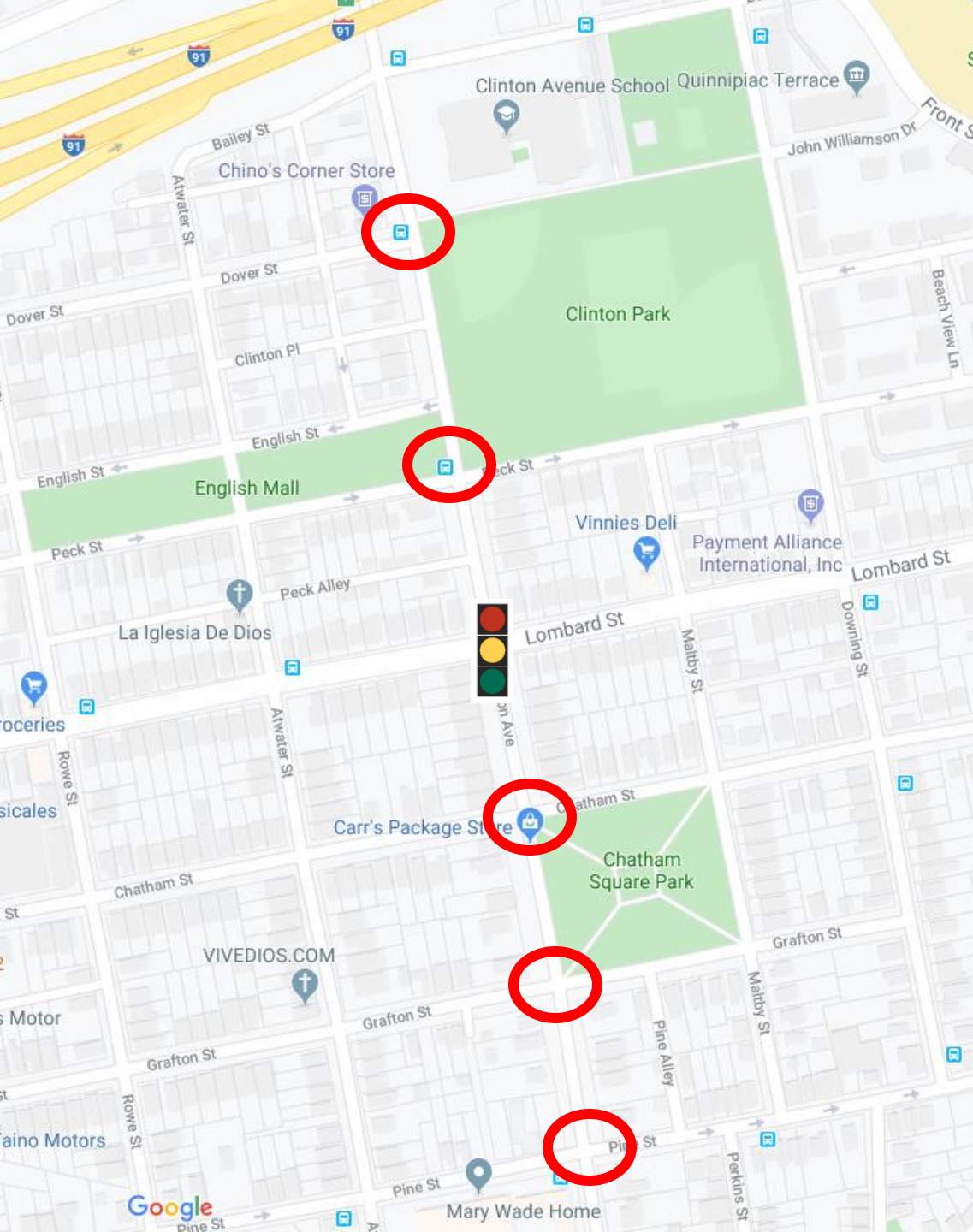


Clinton Avenue

- About 0.4 mile stretch of roadway
- Mostly residential
- K-8th grade school
- Bus route
- Corner stores
- Nursing home









Clinton Avenue at Grafton Street: Before



Clinton Avenue at Grafton Street: After



Thank You!

Questions?

Giovanni Zinn
gzinn@newhavenct.gov
@NewHavenEng

Dawn Henning
dhenning@newhavenct.gov

