

# Complete Streets Information Exchange

Oct 28th–29th, 2020

8:00 am - 12:30 pm

Pratt Street  
Gateway

Thurs, Oct 29<sup>th</sup>

9:00 am – 9:15 am



# Pratt Street Gateway

4,300 ft Long Urban Minor Arterial  
2030 ADT of 9,000

- Before
  - 4 lane section
  - No turn lane separation
  - Avg Speed ~ 43 mph
- After “Road Diet”
  - 2 lane section
  - landscaped median
  - left turn pockets
  - Avg Speed ~ 35 mph















# Pratt Street Gateway

- Project Goals
  - Improve Safety by Reducing Conflict
  - Reduce Speeds through Traffic Calming Measures
  - Improve Accessibility for Peds and Bikes
  - Create a Gateway to Downtown Meriden





# Pratt Street Gateway

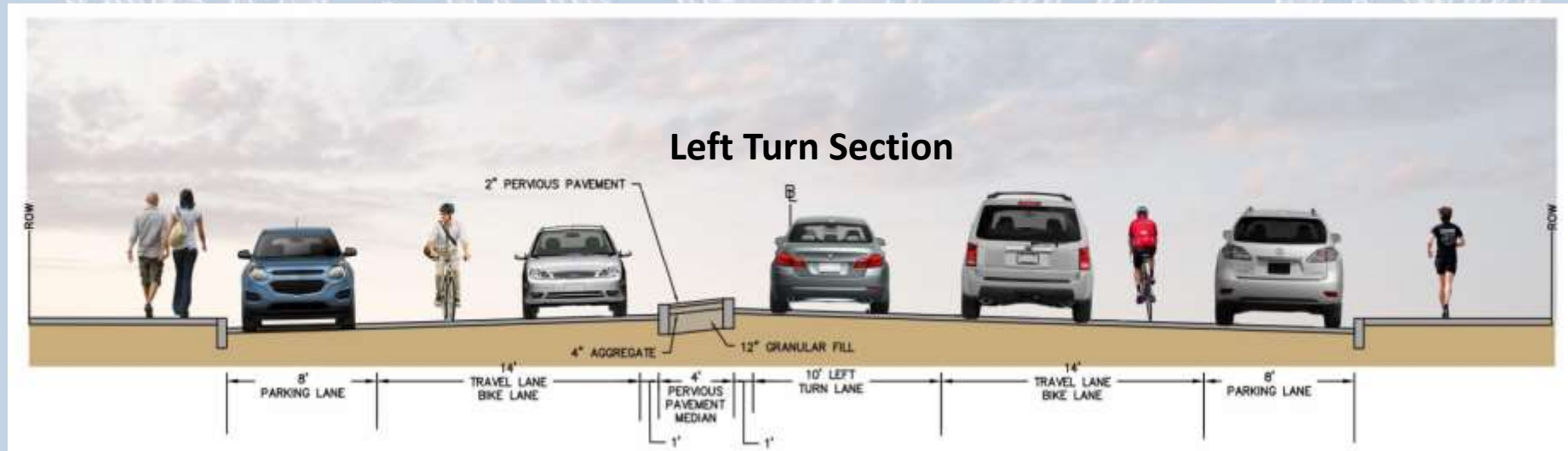
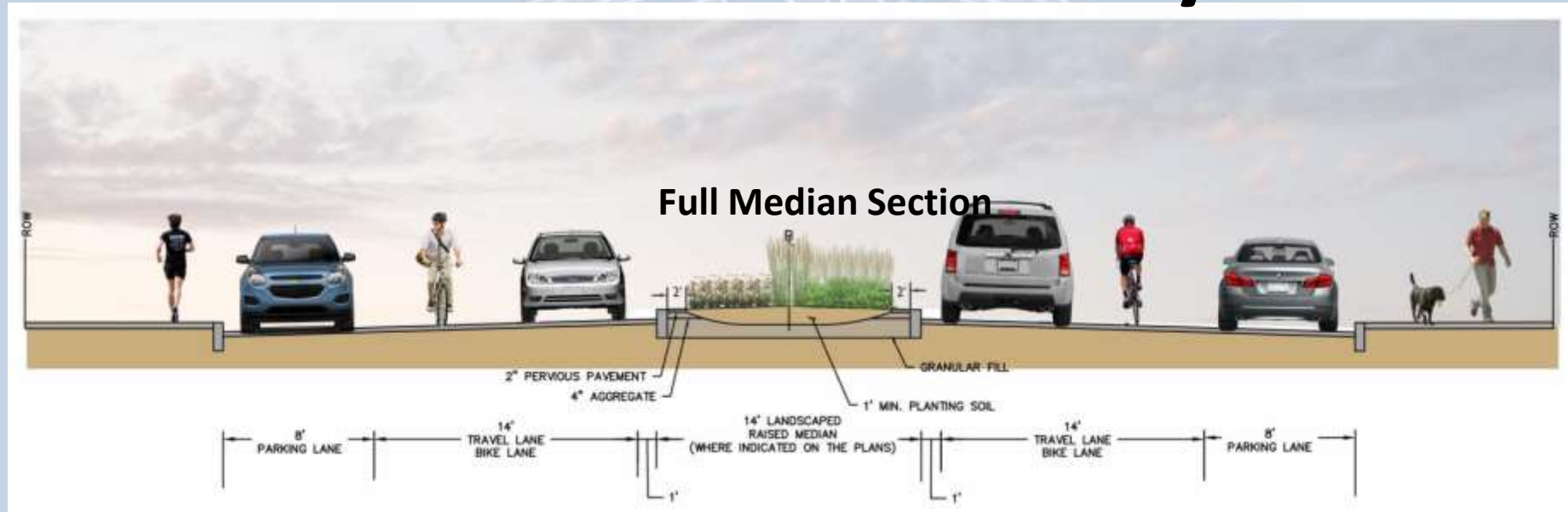
- LOTCIP (Local Transportation Capital Improvement Program) Funded
  - Budget \$3.2 Million
- Project Team
  - Owner – City of Meriden
  - Designer – BSC Group
  - Contractor – LaRosa
  - Inspector – VHB
- Electronic Project Management with Appia



# Pratt Street Gateway

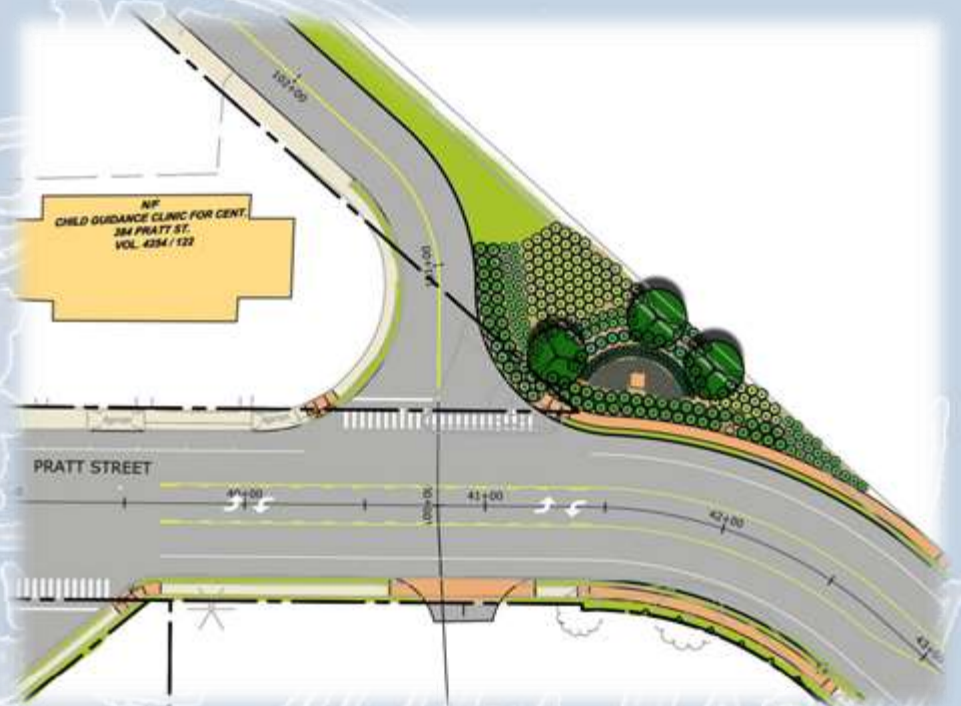
- Project Schedule
  - Semi Final Design to Design Completion
    - September 2016 to April 2017
  - Final Design
    - February 2017
  - Advertise & Award
    - April 2017
- Construction
  - Began Summer 2017
  - Completed September 2018

# Pratt Street Gateway





# Intersection Realignment – Camp St & Pratt St





# Pratt Street Gateway

Camp Street  
Landscaping



RED CHOKEBERRY



RED TWIG DOGWOOD



HORNBEAM



BLUE FALSE INDIGO



GRO-LOW SUMAC



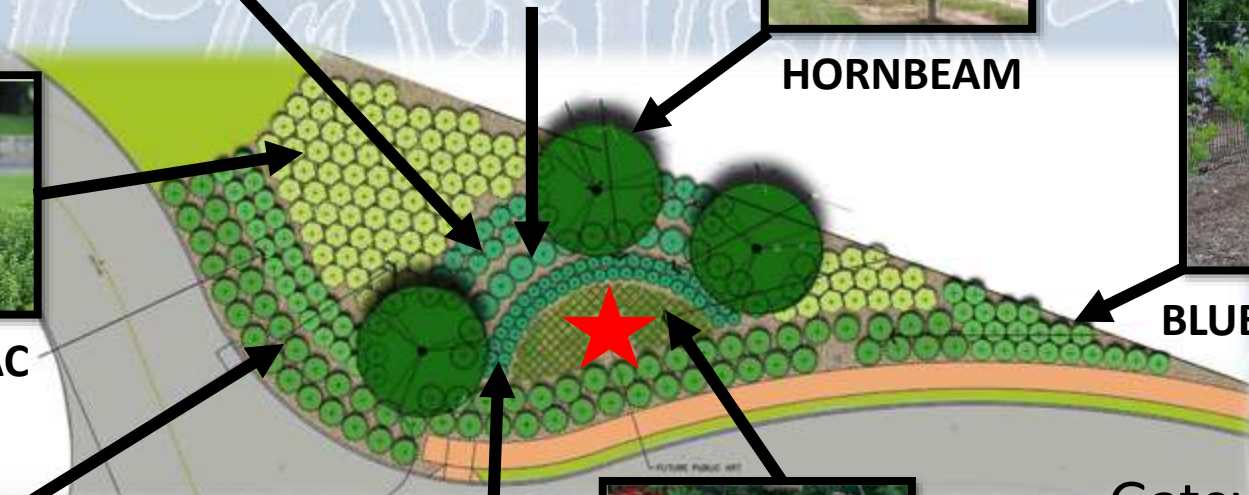
JUNIPER



FEATHER REED GRASS



BLACK-EYED SUSAN

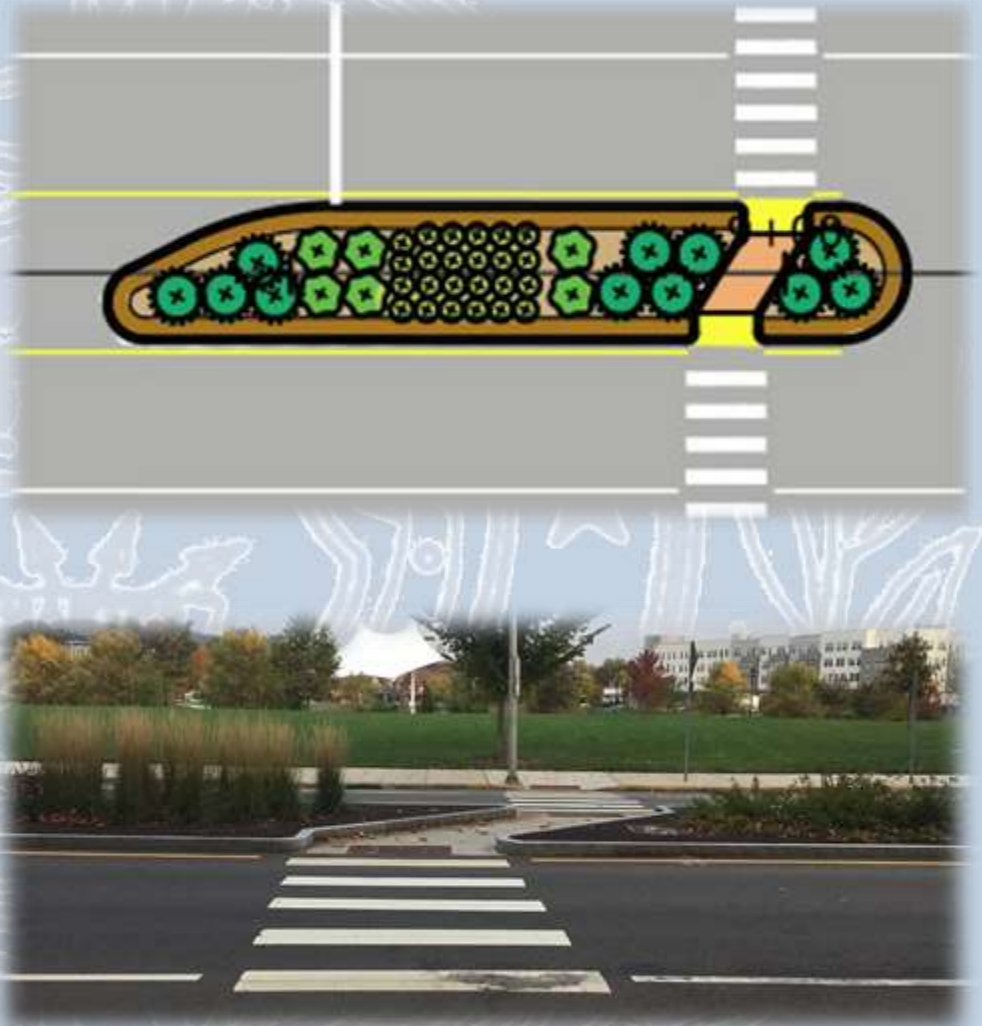


- Gateway Park
- Local Art  Opportunity



# Pratt Street Gateway

- Design Features
  - Offset Crosswalk
    - Improves Safety / Provides Pedestrian Refuge
    - Turns Pedestrian to Towards On-Coming Traffic
    - Used at Mid-Block Crossings
      - Benjamin Street
      - Miller Street
      - 290 Pratt Street



# Pratt Street Gateway

- Typical Median Planting Layout



GRO-LOW SUMAC



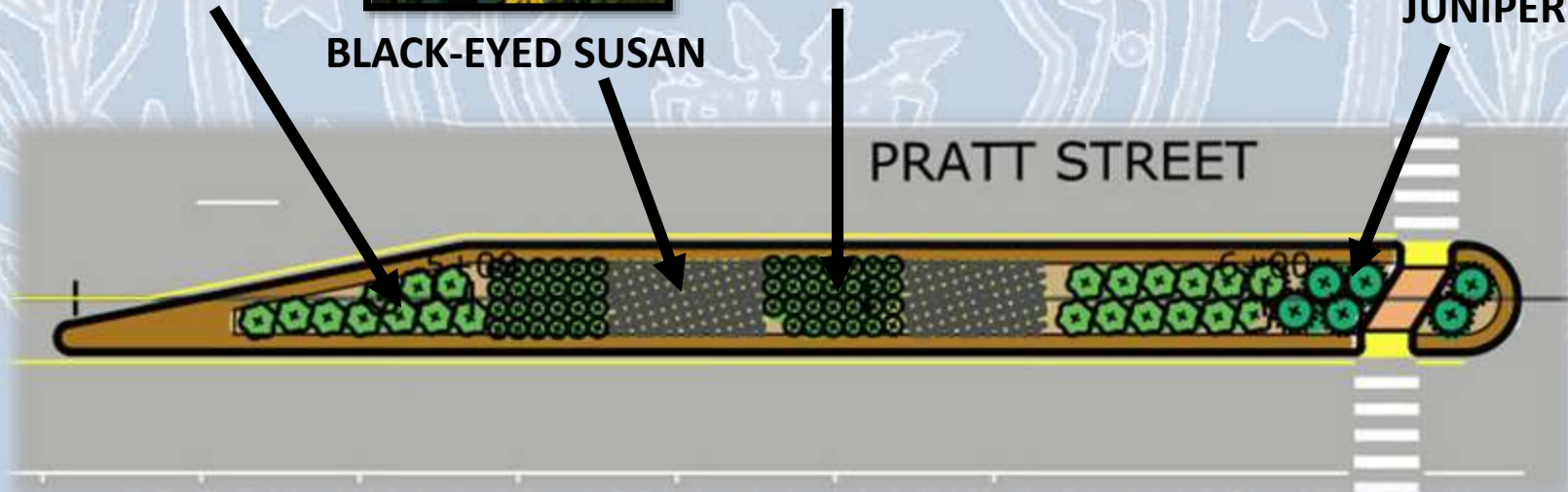
BLACK-EYED SUSAN



FEATHER REED GRASS



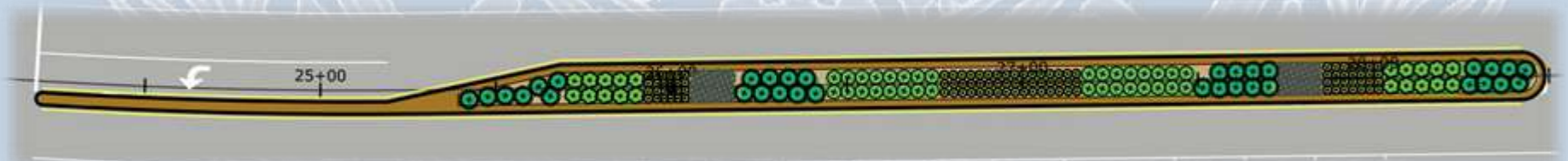
JUNIPER





# Pratt Street Gateway

- Landscaped Median Treatment
  - Granite curbing
  - Low level plantings to minimize maintenance
  - Pavement Border between curb and plantings
    - Provides color contrast and visual interest
    - Maintains clean edge between plantings and pavement
    - Provides snow storage and pervious surface



# Pratt Street Gateway

## – Night Visibility

- Safety Improvements
  - Reduce Conflict Points through movement separation
  - Intersection Realignments
  - Medians for access management
  - Addition of LED Stop Signs at Major Intersections
  - ADA Compliant Ramps & Enhanced Crosswalks
  - Median-Alert – Retroreflective Nosing



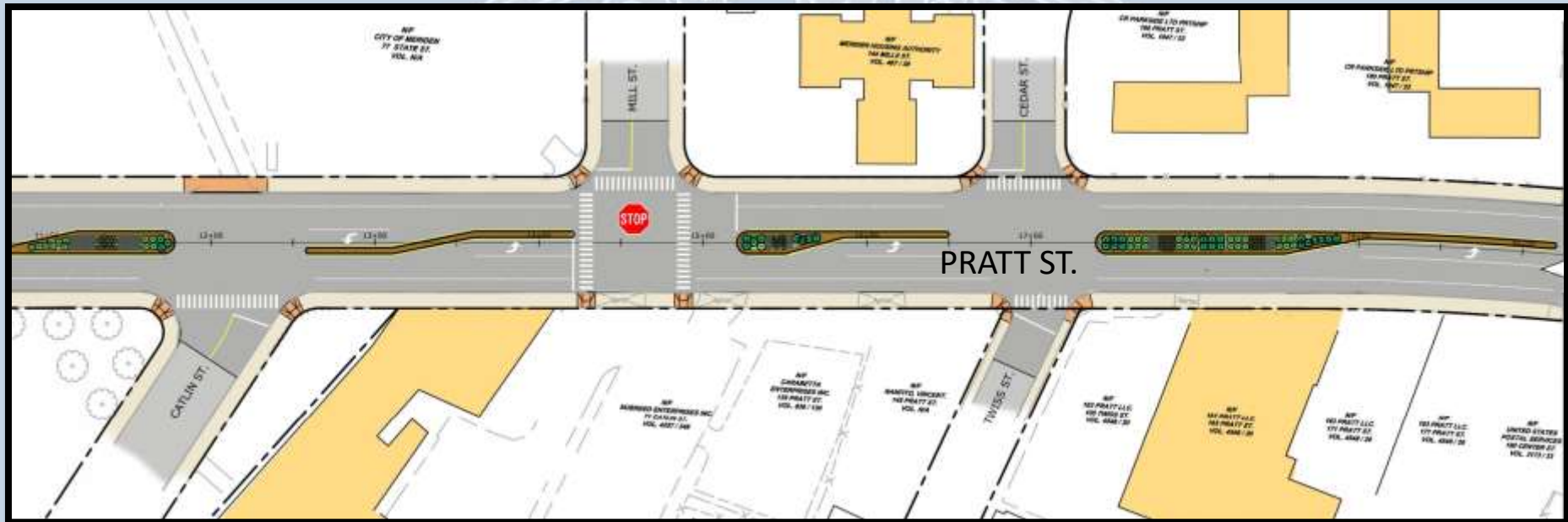


# Pratt Street – Segment 1



- Maintain WB Lane Usage
- Maintain Fire House Signal
- Pedestrian Crosswalks for HUB
- Removal of HUB Drive Aprons

# Pratt Street – Segment 2



- Update Crosswalk and Curb Ramps
- 4-Way Stop Control w/ LED Stop Sign

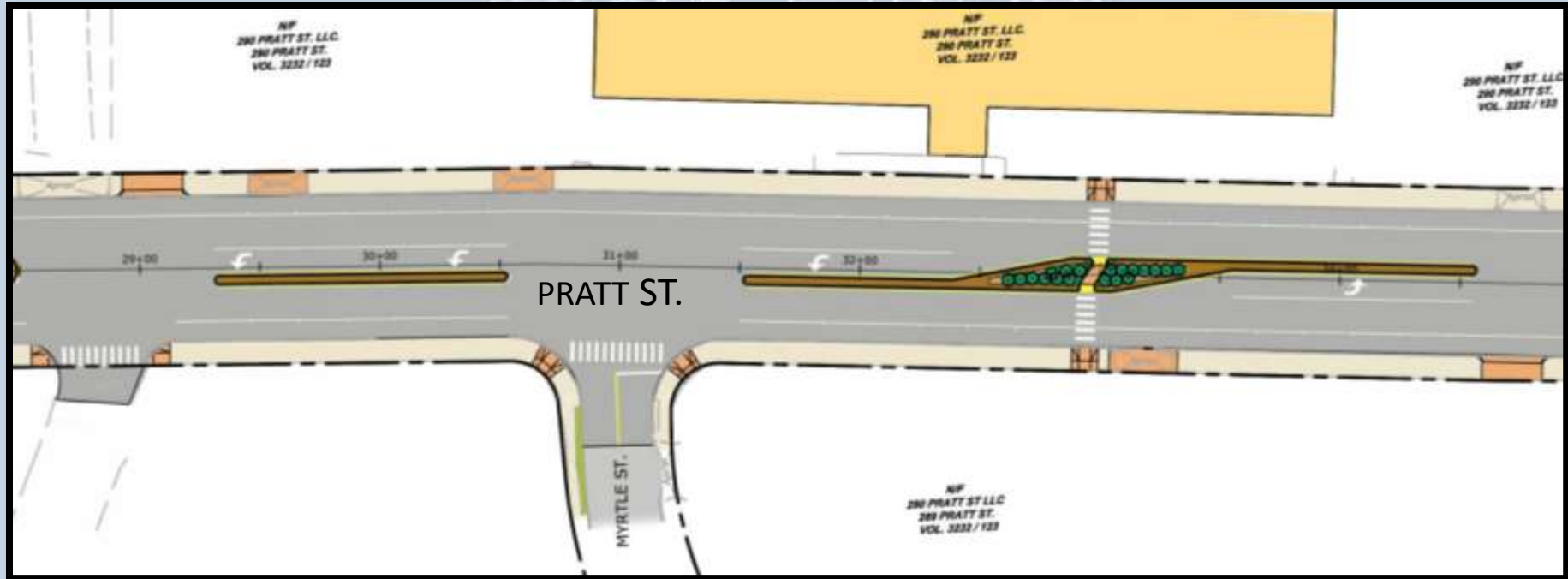


# Pratt Street – Segment 3



- Realign Center Street Intersection
- Update Crosswalk and Curb Ramps
- Minor Landscaping at intersection
- 4-Way Stop Control w/ LED Stop Sign

# Pratt Street – Segment 4



- Consolidate / Reconfigure 290 Pratt St. Access for both sides of the building
- Offset Pedestrian Crosswalk























