

Modern Roundabout Design

Town of Glastonbury, CT

October 2020



CDM Smith Inc. and Tighe & Bond

Hebron Avenue Before Roundabouts



Tighe & Bond

CDM
Smith

Before

- Congestion
- Central business district
- Safety
- Route 2 Ramps



Tighe & Bond

CDM
Smith

Process

- Preliminary study
- Town Council
- Public hearing



Tighe & Bond

CDM
Smith

Process

- Safety
- Right of way impacts
- Bicycle/pedestrian accommodations
- Constructability
- Aesthetics



Tighe & Bond

CDM
Smith

Implementation – Unique, Complex, and Sustainable

- First modern roundabouts
- Double roundabouts



Tighe & Bond

CDM
Smith

Implementation – Unique & Complex



Tighe & Bond

CDM
Smith

Implementation – Social, Economic, Sustainable Design



Overall a great design and application of a modern roundabout. The roundabout slows traffic, but provides for smoother flow than a signalized intersection. The car speeds make it much safer and easier for a pedestrian and bicycle rider to get through the intersection safely and comfortably.

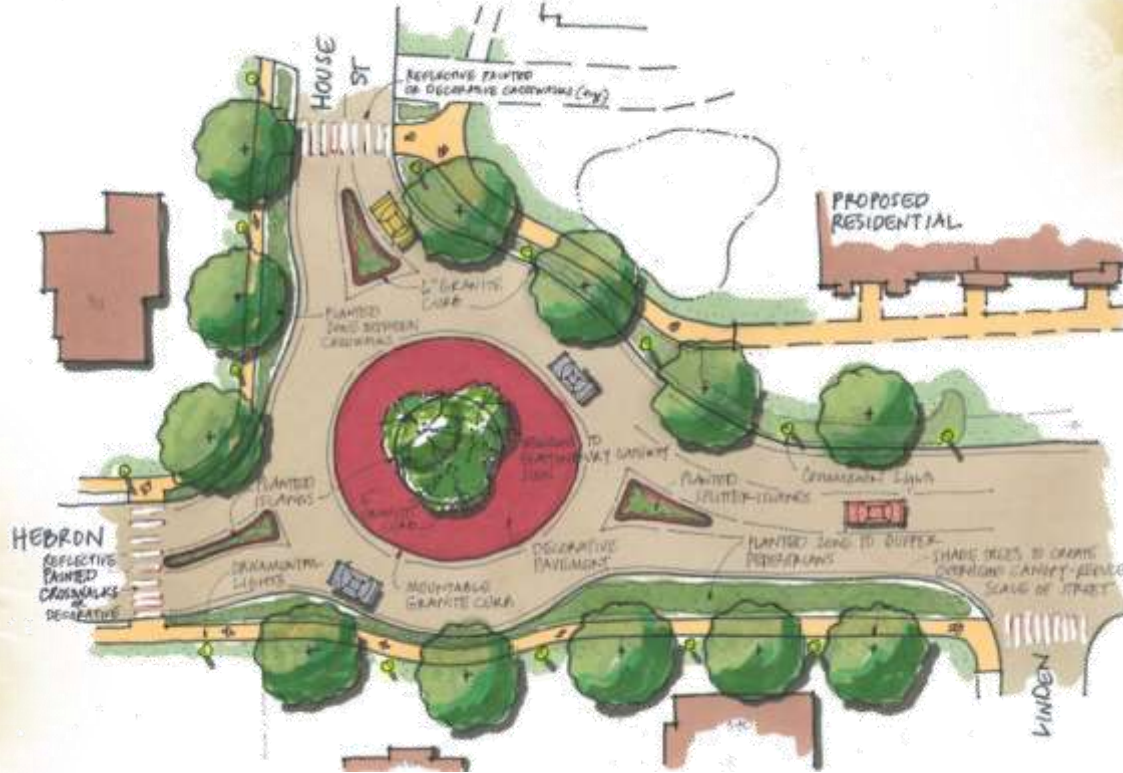
—Center for Latino Progress Bike Walk Audit



Tighe & Bond

CDM
Smith

Implementation – Sustainable Design



Tighe & Bond

**CDM
Smith**

Implementation – Unique & Complex



Tighe & Bond

CDM
Smith

Implementation – Unique & Complex



Tighe & Bond

CDM
Smith

Implementation – Economic Design

- Overnight conversion sequencing
- Maintained access to businesses



Tighe & Bond

CDM
Smith

Results – Economic Benefits



Tighe & Bond

CDM
Smith

Results

- Coordination of multiple funding sources
 - Local Accident Reduction Program
 - LOTCIP
 - Municipal
- Coordination of multiple construction projects and seasons
- Expectations exceeded
 - Public & Town
- Crash reduction
- Improved access to and through the corridor
- Increase in development
- \$4.25 million



Tighe&Bond

CDM
Smith

Positive Feedback



Jo-Ann Zesut-Clinton Despite people still trying to learn the lay of the land, I LOVE the rotaries! It has made travel down Hebron Ave SO much easier.

Like · Reply · 12w



2



Joanne Antigone VK Jo-Ann Zesut-Clinton Yes. Before the roundabouts you could be stuck at the traffic lights (especially lunch hour and from 4-6pm) for 45 minutes. You could never get onto Hebron Avenue from house st.

Like · Reply · 12w



1



Write a reply...



Alice Anderson Love rotaries!!!!

Like · Reply · 12w



4



Jessica Montano Maybe people haven't figured quite how to navigate them yet but I haven't had to wait in any long lines of traffic since they were constructed. So I give them a 👍

Like · Reply · 12w



5



Len Specht Jessica Montano agreed. Those intersections move along very quickly

Like · Reply · 12w



2



Tighe&Bond

CDM
Smith

Positive Feedback

The pavement rehab and roundabouts are a true makeover and traveling on this road is much safer and more efficient with these traffic calming solutions in place.



Tighe&Bond

CDM
Smith

Acknowledgements and Thank You

- Town of Glastonbury
- Connecticut Department of Transportation
- CDM Smith Inc.
- Tighe & Bond
- GM2 Associates, Inc.
- Freeman Companies, LLC
- Morais Concrete Service Inc.
- Colossale Concrete, Inc.



Tighe&Bond

CDM
Smith