

Implementing Complete Streets

Sandy Fry, Bicycle and Pedestrian Coordinator,
City of Hartford

Getting to Complete Streets

- ☐ High Level Commitment
- ☐ Design Guidance
- ☐ A Plan
- ☐ Try things out
- ☐ Vigilance!
- ☐ Evaluate

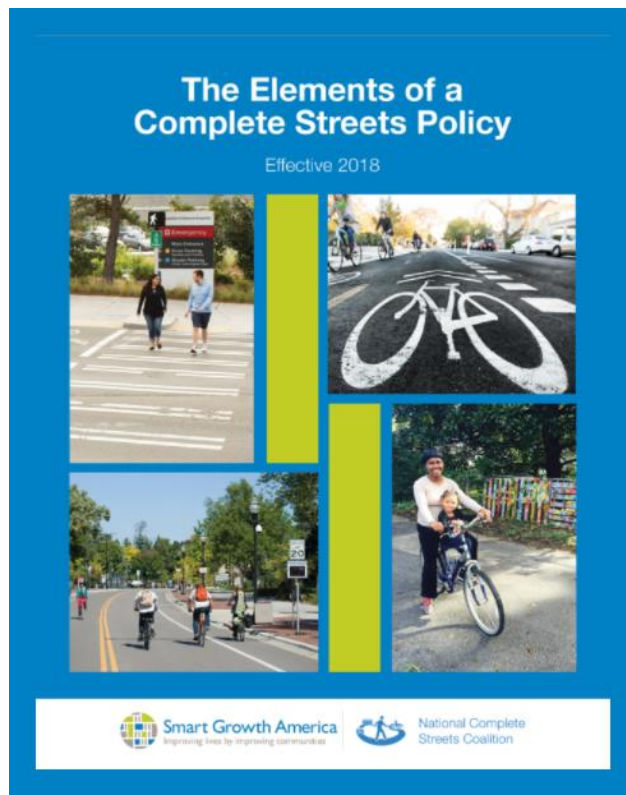
High Level Commitment

- ❑ Policy is ideal
- ❑ Other approaches:
 - Chief elected official support
 - Staff driven



What is in the Policy?

❑ Don't reinvent the wheel
www.smartgrowthamerica.com



An ideal Complete Streets policy includes the following:

1. → **Vision and intent:** Includes an equitable vision for how and why the community wants to complete its streets. Specifies need to create complete, connected, network and specifies at least four modes, two of which must be biking or walking.
2. → **Diverse users:** Benefits all users equitably, particularly vulnerable users and the most underinvested and underserved communities.
3. → **Commitment in all projects and phases:** Applies to new, retrofit/reconstruction, maintenance, and ongoing projects.
4. → **Clear, accountable exceptions:** Makes any exceptions specific and sets a clear procedure that requires high-level approval and public notice prior to exceptions being granted.
5. → **Jurisdiction:** Requires interagency coordination between government departments and partner agencies on Complete Streets.
6. → **Design:** Directs the use of the latest and best design criteria and guidelines and sets a time frame for their implementation.
7. → **Land use and context sensitivity:** Considers the surrounding community's current and expected land use and transportation needs.
8. → **Performance measures:** Establishes performance standards that are specific, equitable, and available to the public.
9. → **Project selection criteria:** Provides specific criteria to encourage funding prioritization for Complete Streets implementation.
10. → **Implementation steps:** Includes specific next steps for implementation of the policy.

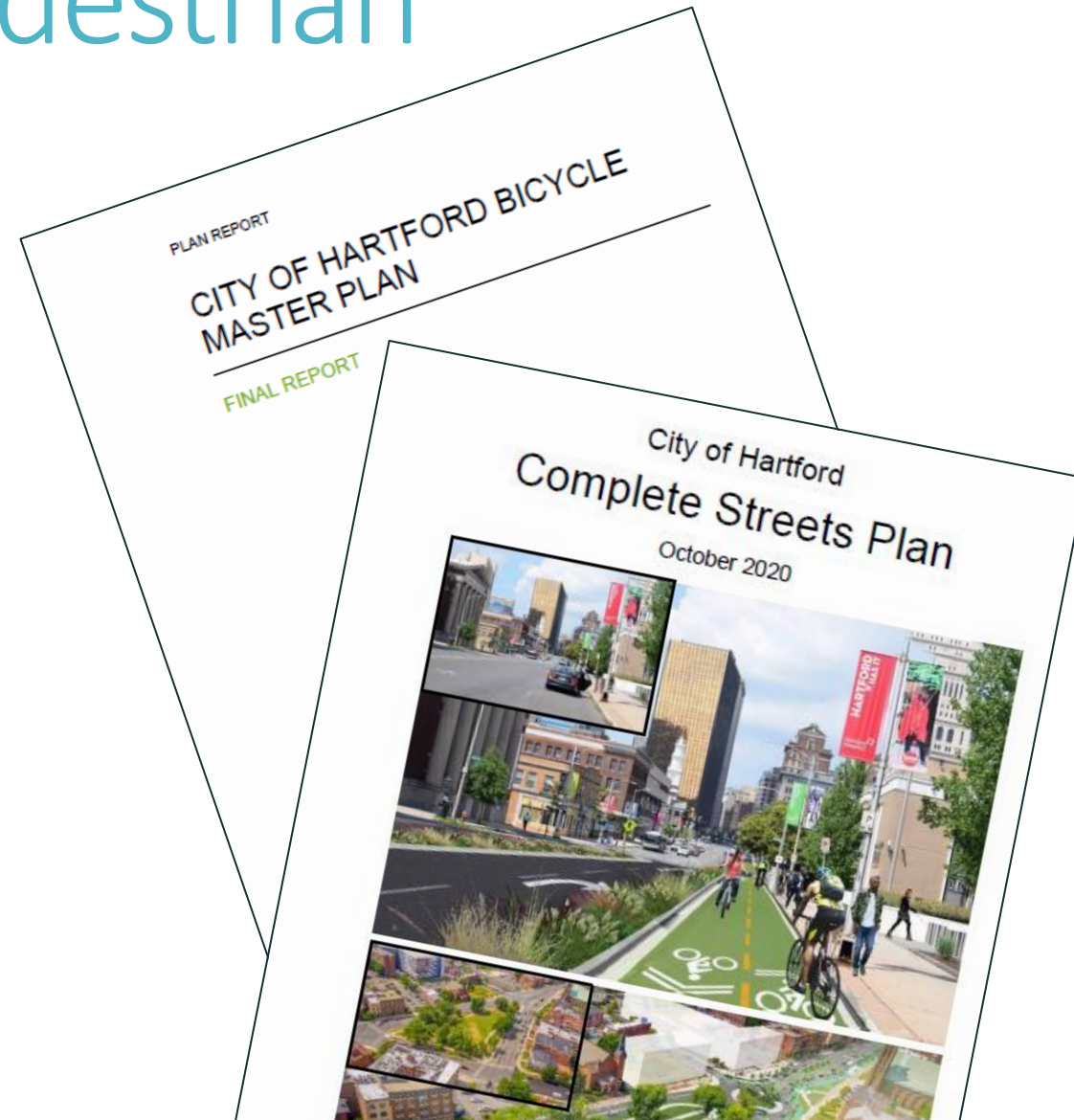
Design Guidance

- ☐ Plenty of guides available
- ☐ Tailor for your community
- ☐ Helps with buy in



A Plan – Bicycle and Pedestrian

- ❑ Informs other projects
 - Repave
 - Safety complaints
- ❑ Provides targets
 - Budget
 - Schedule
- ❑ Inspires!



Tactical Urbanism

- ❑ Advocates' ideas
- ❑ Try out new approaches
- ❑ Less expensive



Success breeds success



Stay vigilant

- ❑ It takes time to build new habits
- ❑ Communication is key to avoid missed opportunities
- ❑ Resistance to change is natural

Evaluate

- ☐ Safety improvements
- ☐ Traffic impacts
- ☐ Mode shift
- ☐ Public reaction