

EMPHASIS AREA PEDESTRIAN



Definition: This emphasis area is defined based on the “person type” field in the crash report is marked as “Pedestrian” or “Other Pedestrian (wheelchair, person in a building, skater, pedestrian conveyance)”.

Figure 1: Total Number of Fatal and Suspected Serious Injuries by Year

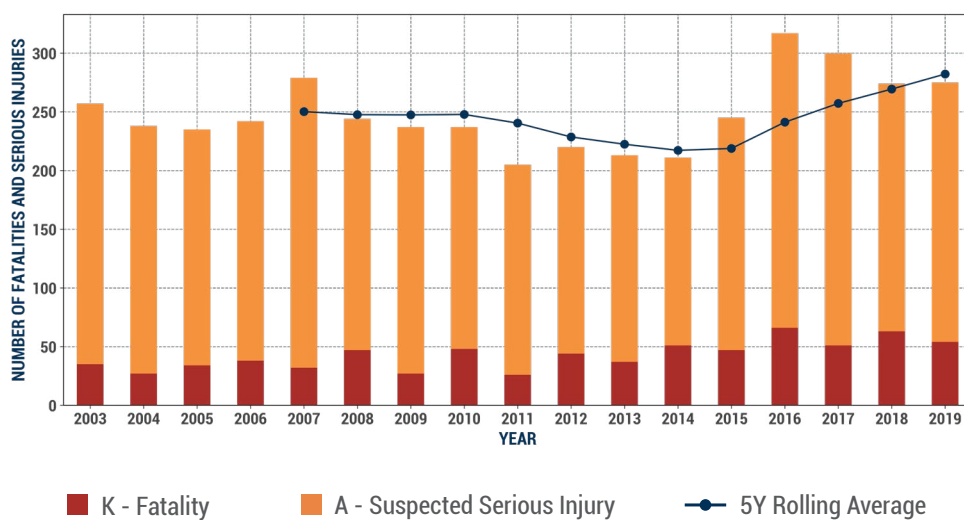


Figure 2: Fatal and Suspected Serious Injuries by State, Local, Rural, and Urban Roadways

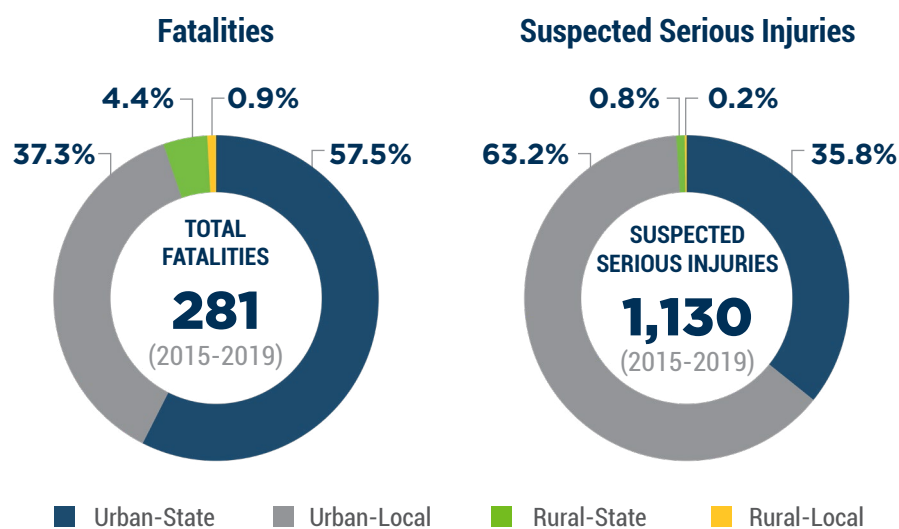
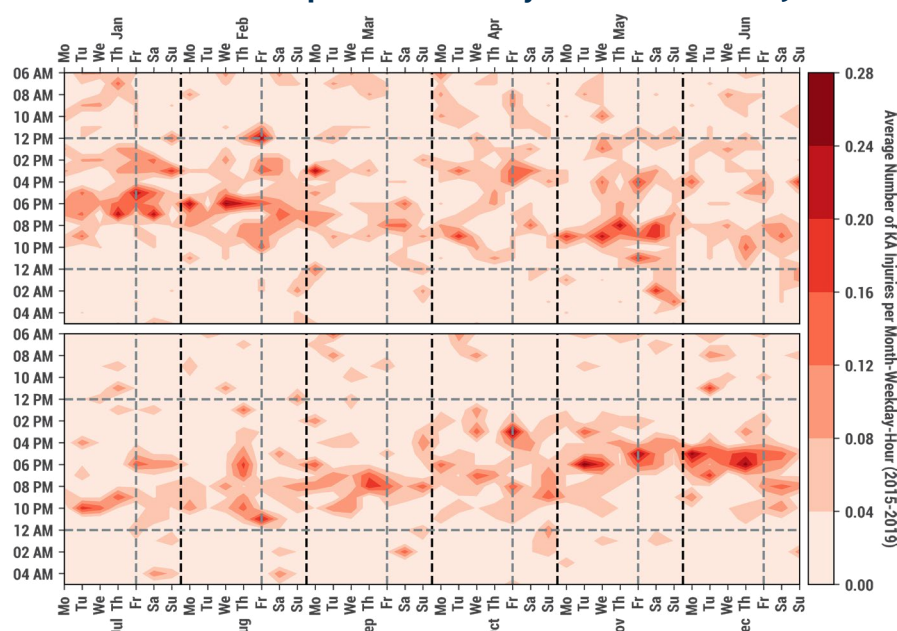


Figure 3: Average Fatal and Suspected Serious Injuries by Month, Day, and Hour

Figure 4: Overlap with other Emphasis Areas

Total Fatal and Suspected Serious Injuries 2015-2019: **1,411**



Fatalities

Suspected Serious Injuries

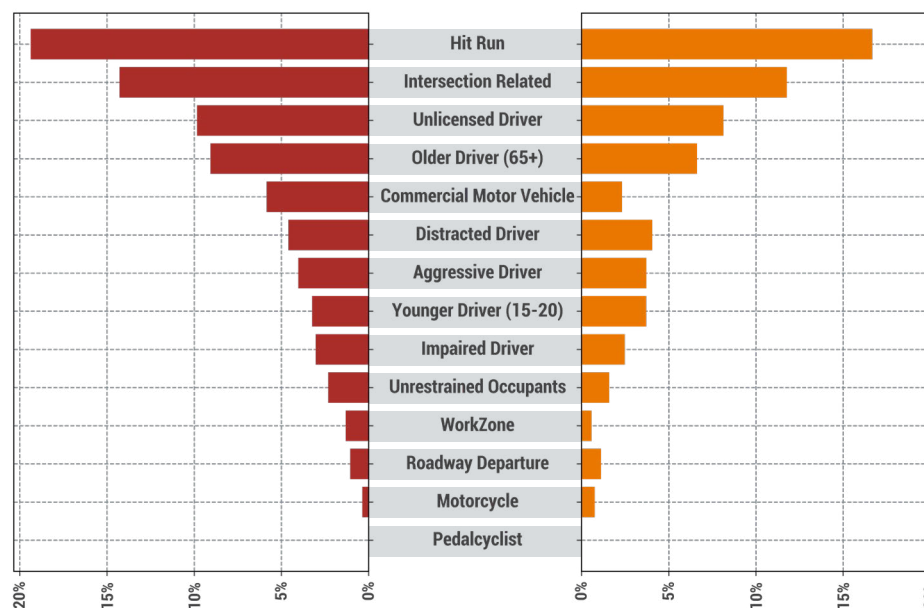
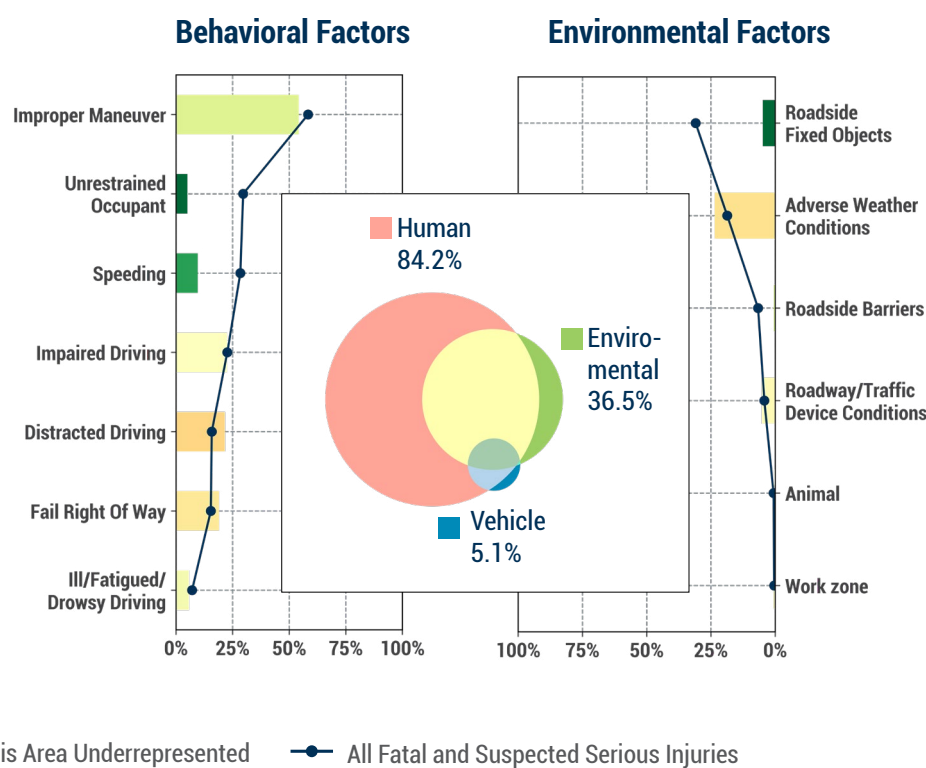
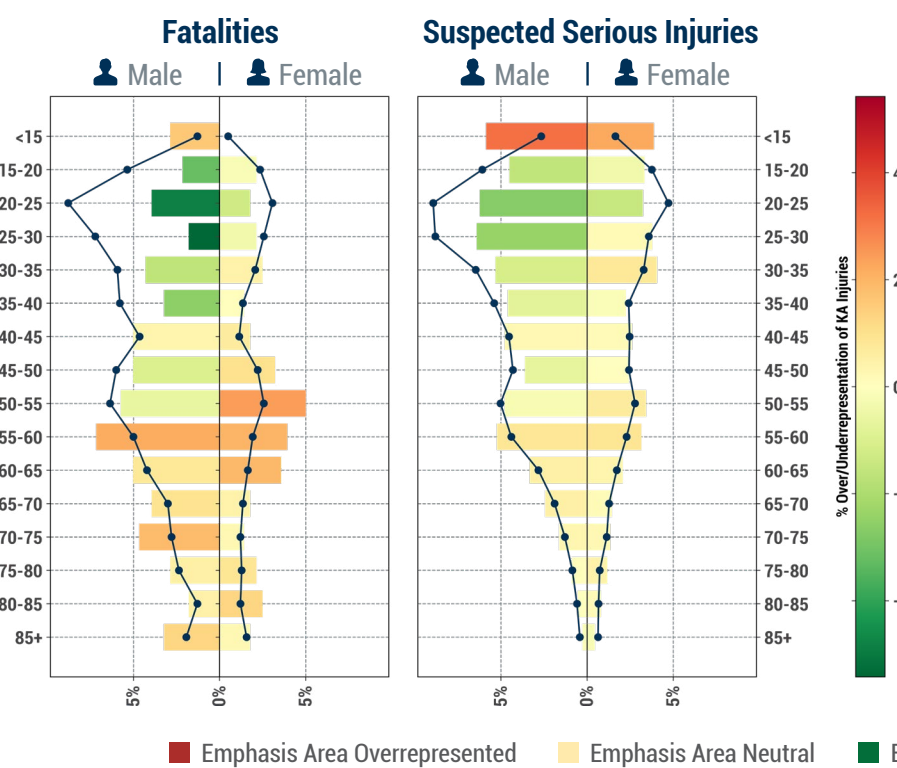


Figure 5: Age and Gender of Fatal and Suspected Serious Injuries

Figure 6: Fatal and Suspected Serious Injuries Contributing Factors



Legend: K = Fatal Injury A = Suspected Serious Injury

Source: Connecticut Transportation Institute at the University of Connecticut, Accessed: 29 April 2020, <https://www.ctcrash.uconn.edu>