



Definition: This emphasis area is defined based on the “first harmful event” field in the crash report marked as hitting a fixed object, parked vehicle, a barrier, rollover or immersion in addition to the “manner of collision” field marked as head-on or sideswipe opposite direction.

Figure 1: Total Number of Fatal and Suspected Serious Injuries by Year

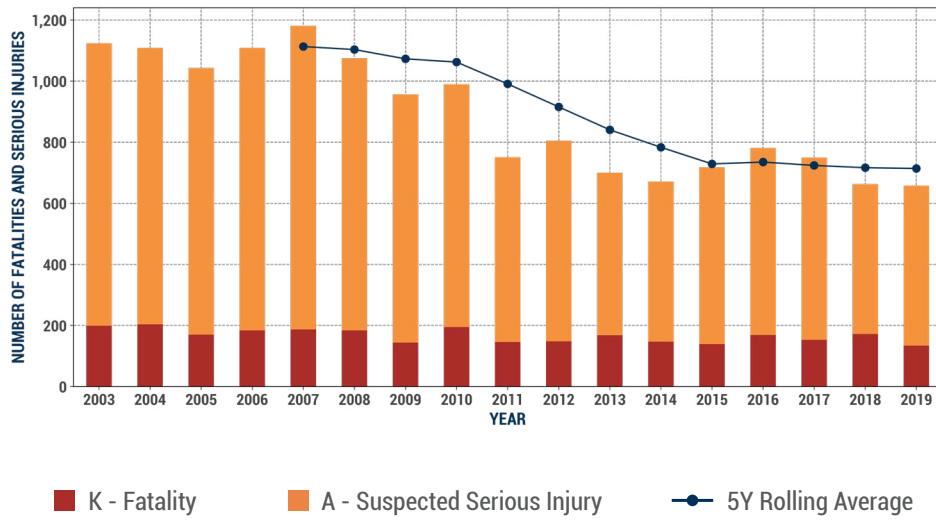


Figure 2: Fatal and Suspected Serious Injuries by State, Local, Rural, and Urban Roadways

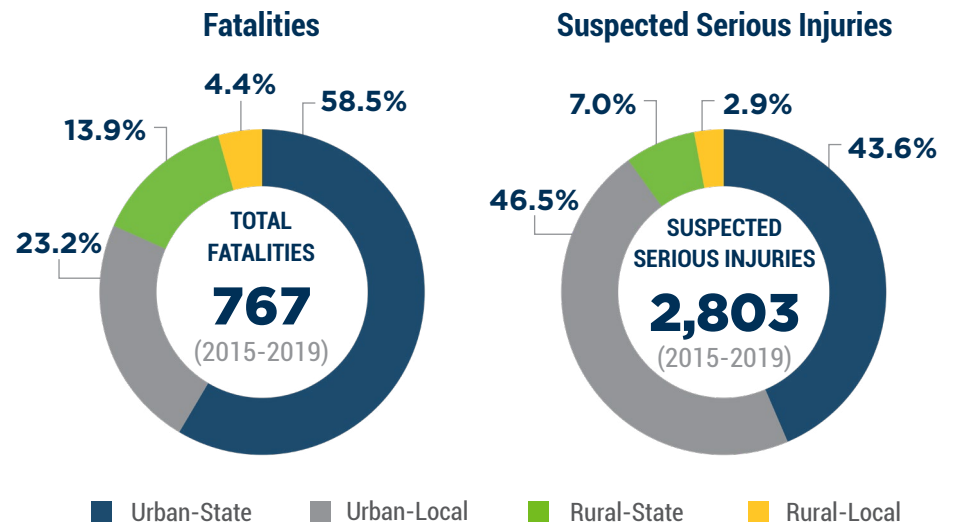


Figure 3: Average Fatal and Suspected Serious Injuries by Month, Day, and Hour

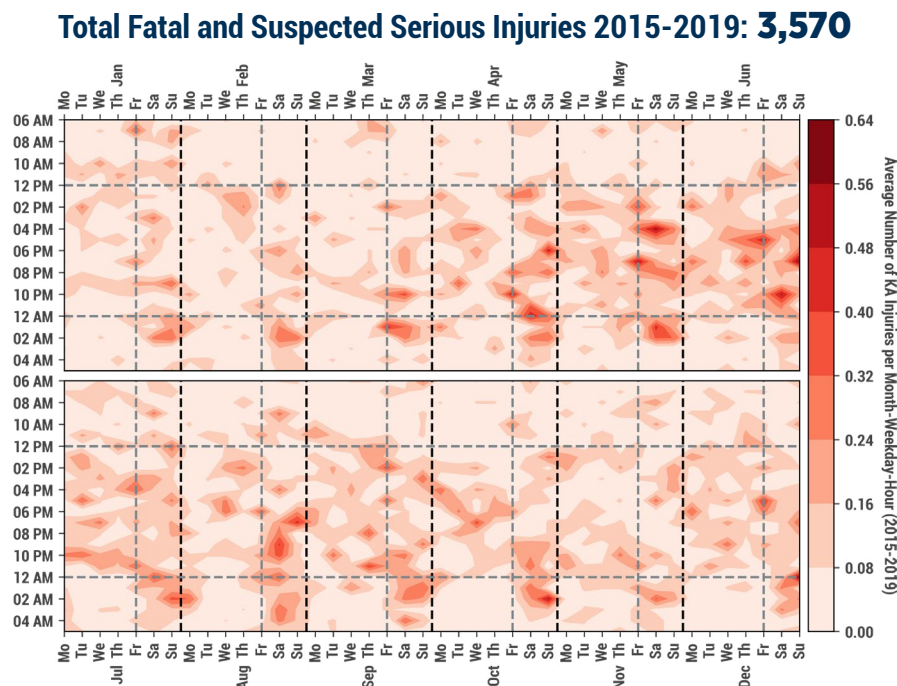


Figure 4: Overlap with other Emphasis Areas

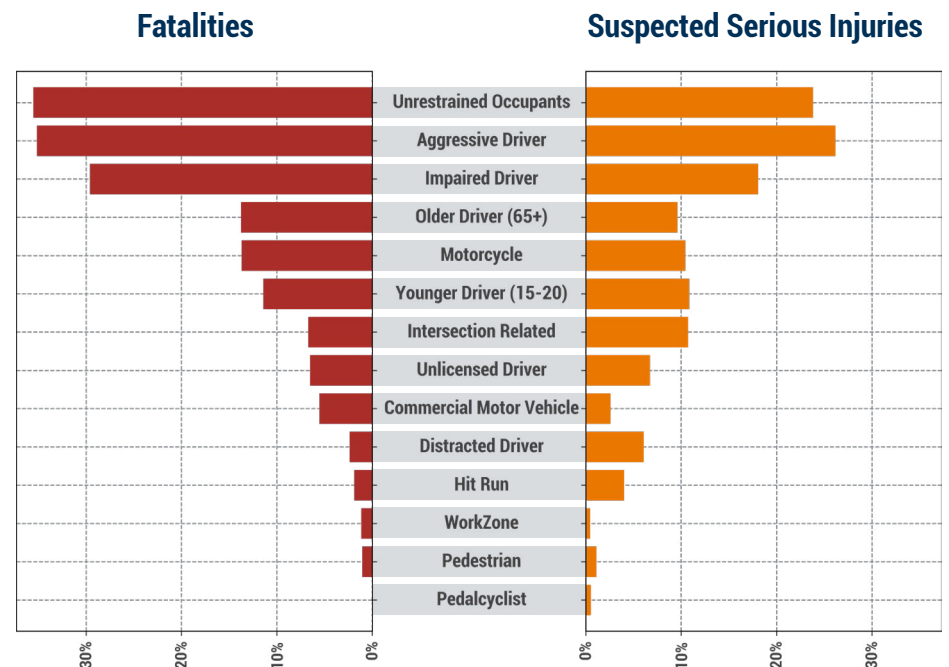


Figure 5: Age and Gender of Fatal and Suspected Serious Injuries

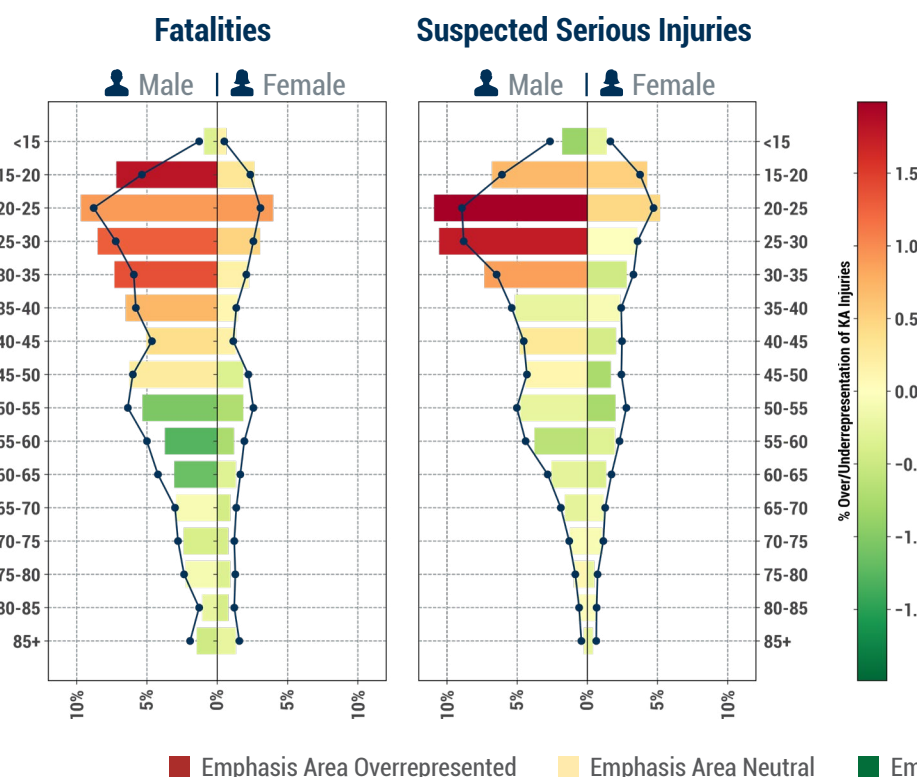
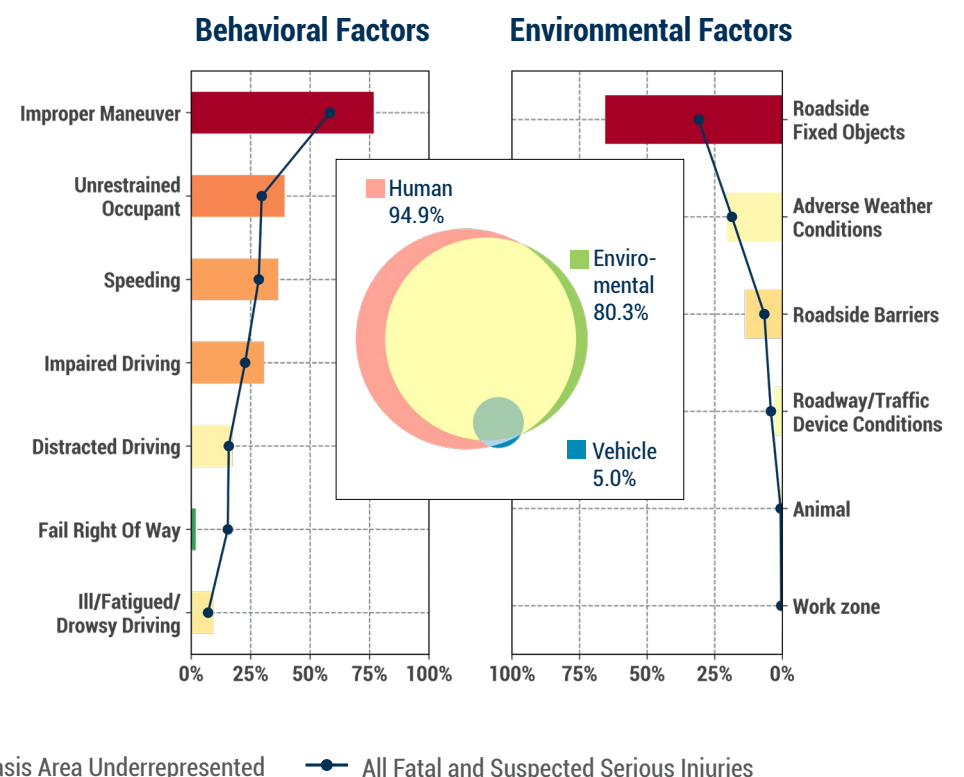


Figure 6: Fatal and Suspected Serious Injuries Contributing Factors



Legend: K = Fatal Injury A = Suspected Serious Injury

Source: Connecticut Transportation Institute at the University of Connecticut, Accessed: 29 April 2020, <https://www.ctcrash.uconn.edu>

INTERSECTION RELATED



Definition: This emphasis area is defined based on the “crash specific location” field in the crash report marked as “Intersection” or “Intersection-Related”.

Figure 1: Total Number of Fatal and Suspected Serious Injuries by Year

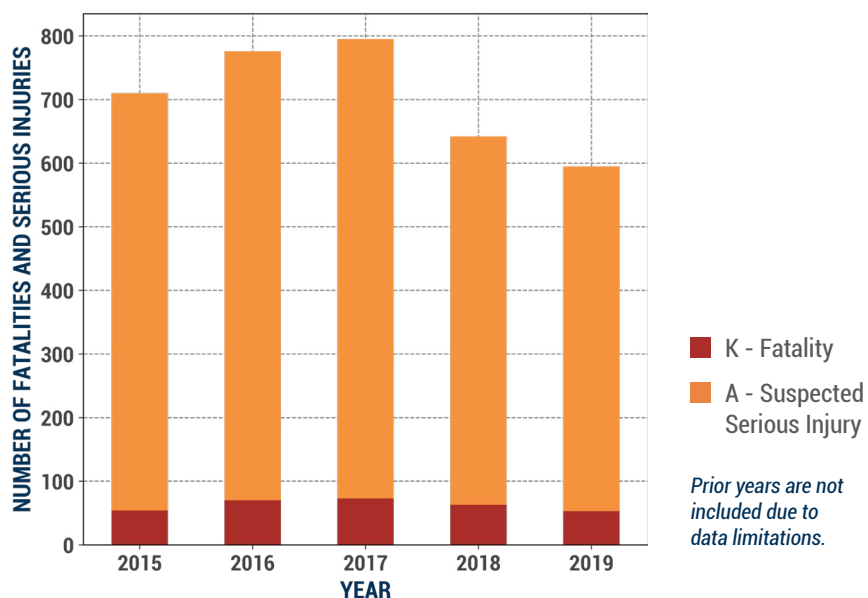


Figure 2: Fatal and Suspected Serious Injuries by State, Local, Rural, and Urban Roadways

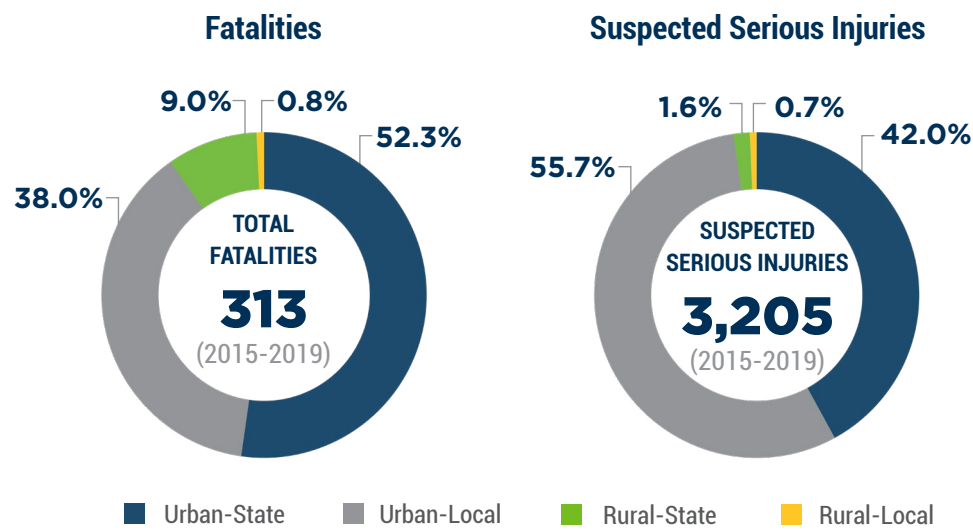


Figure 3: Average Fatal and Suspected Serious Injuries by Month, Day, and Hour

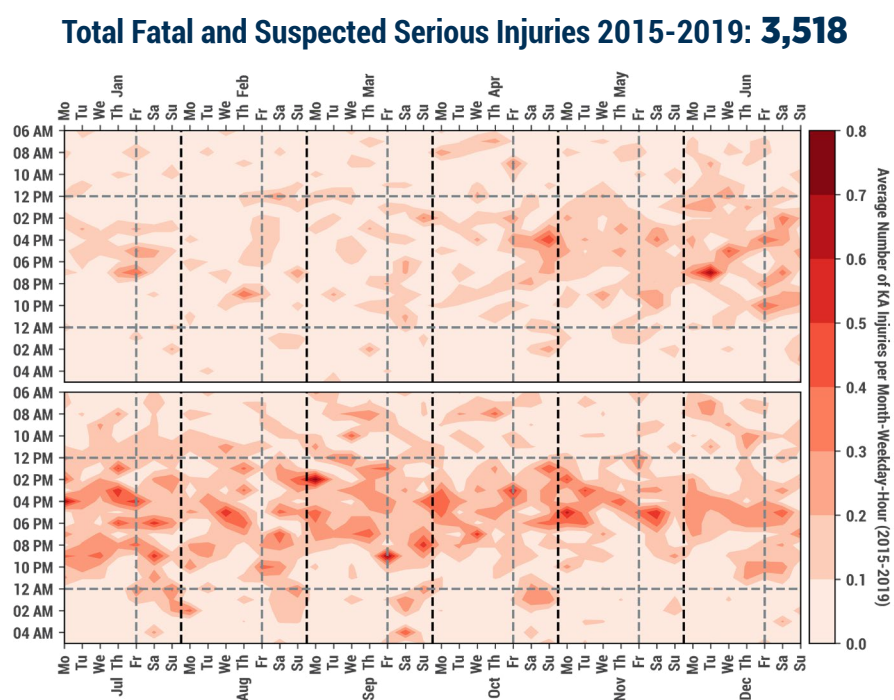


Figure 4: Overlap with other Emphasis Areas

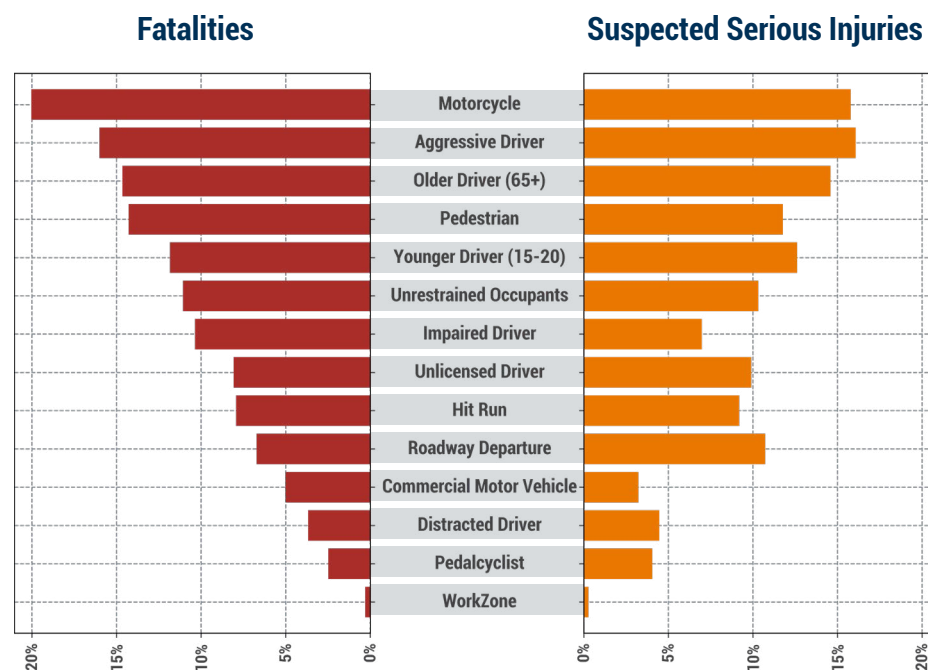


Figure 5: Age and Gender of Fatal and Suspected Serious Injuries

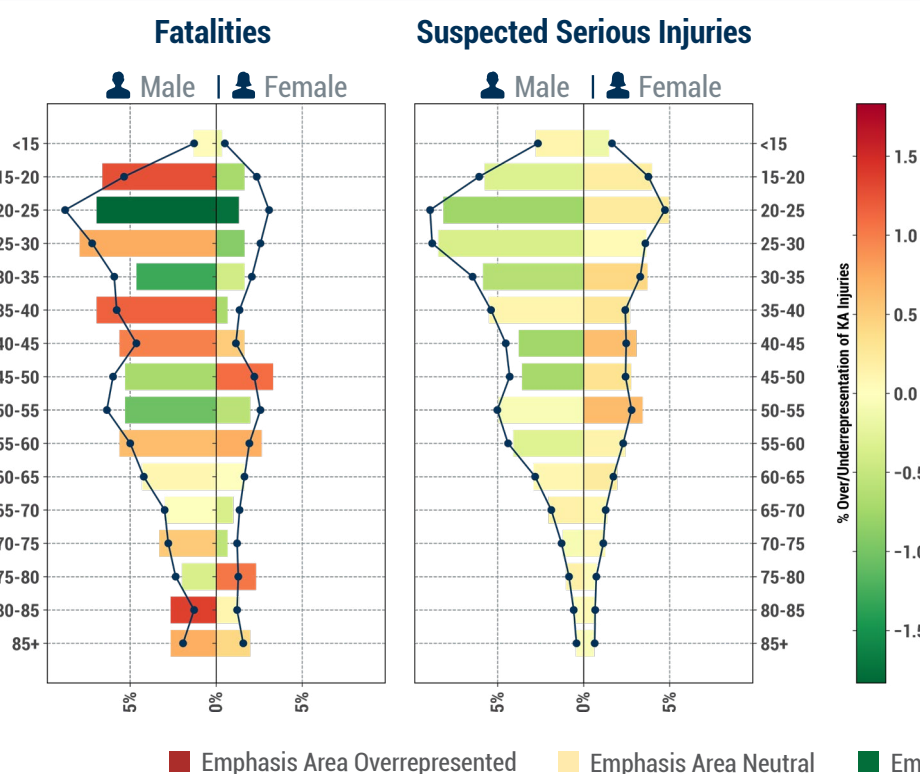
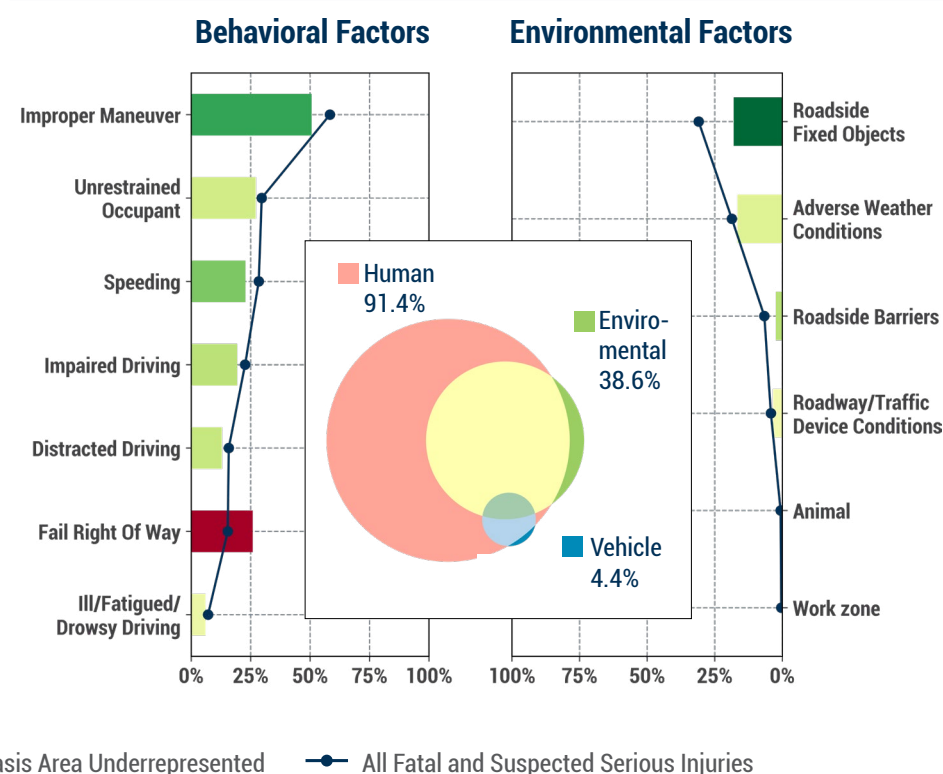


Figure 6: Fatal and Suspected Serious Injuries Contributing Factors



Legend: K = Fatal Injury A = Suspected Serious Injury

Source: Connecticut Transportation Institute at the University of Connecticut, Accessed: 29 April 2020, <https://www.ctcrash.uconn.edu>